



## Hillside Road, SW2

### £525,000

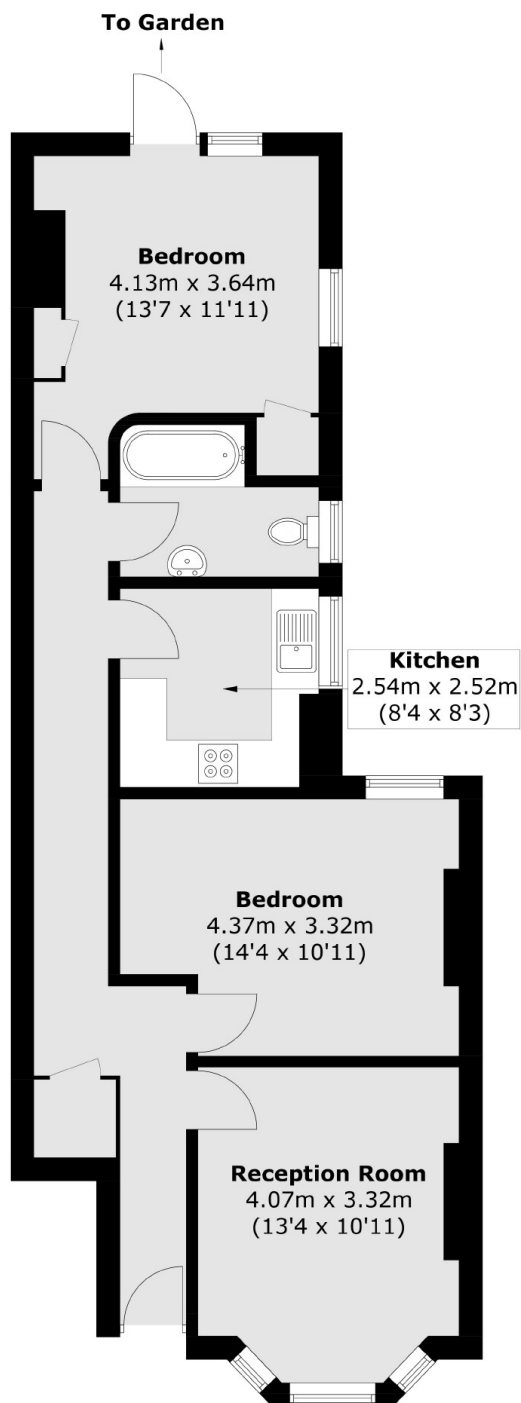
A spacious Edwardian maisonette in one of Streatham Hill's most sought after locations. This two double bedroom property benefits from a large living space, separate newly fitted kitchen and is being sold with a share of the freehold.

Hillside Road is well known for its period homes, close proximity to the park and perfect position within Streatham Hill. The area has an excellent selection of shops and restaurants, while mainline rail services travel to London Bridge, Victoria and Blackfriars.

### Features

Share Of Freehold  
No Chain

# Hillside Road, London, SW2



Total area (approx.): 66.2 sq. m (712.6 sq. ft)