



London Road, SW16

£300,000

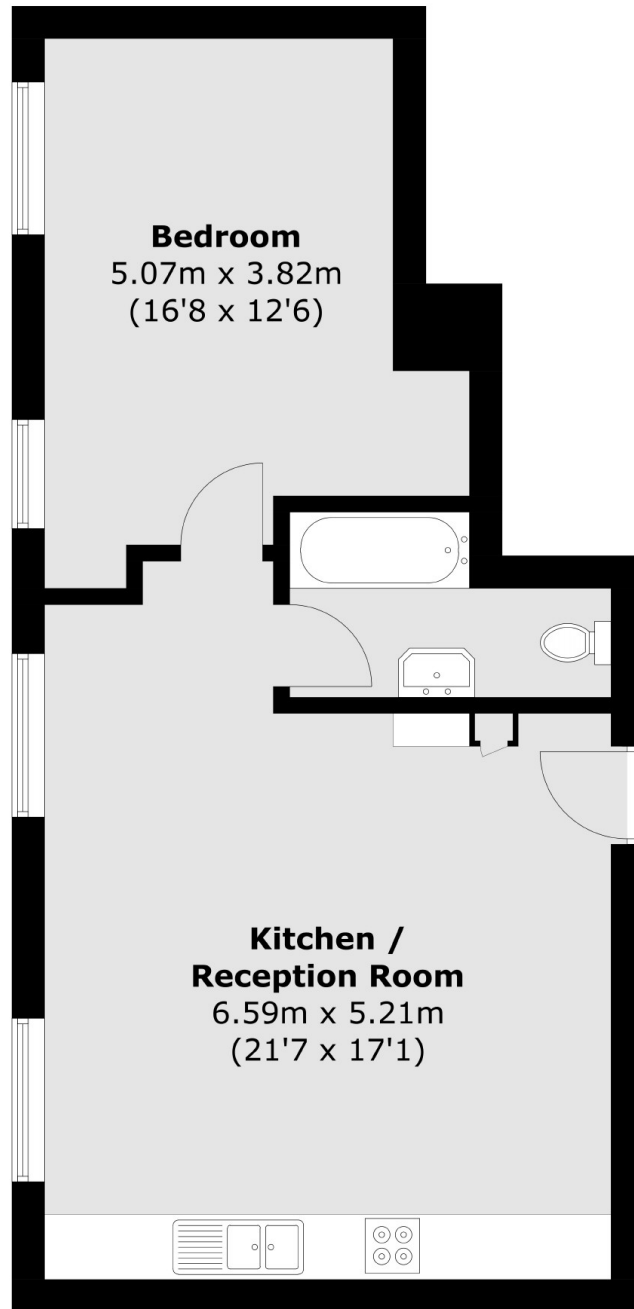
At just under 550sqft this modern one double bedroom flat is in great condition throughout. This home has a spacious open-plan kitchen/living room, large bedroom and is being offered with no onward chain.

London Road has a mix of restaurants and shops. Norbury Station is also a short walk away which provides links to London Victoria and London Bridge via Clapham Junction.

Features

- Large Kitchen/Living Room
- Communal Garden
- Immaculate Condition
- Convenient Location
- Secure Development
- No Chain

London Road, London, SW16



Total area (approx.): 50.7 sq. m (545.7 sq. ft)