



Ambleside Avenue, SW16

£425,000

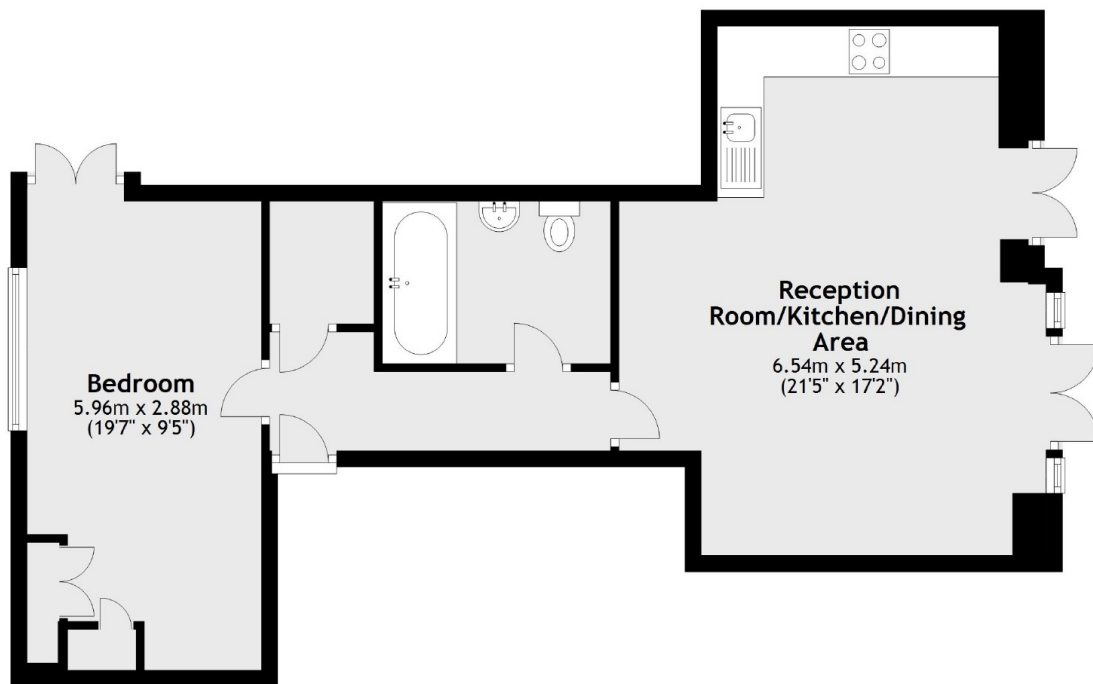
At over 650sqft this large one double bedroom has a large and bright open-plan living accommodation. A good sized patio is ideal for summer evenings and entertaining. The bedroom has space for both sleeping and storage with a dressing area to the right when you walk in. This home also has a further communal garden and is offered to the market with no onward chain.

Ambleside Avenue is situated in the highly sought-after Streatham Park Conservation area close to Tooting Bec Common. Streatham mainline station is situated close by, which has quick links to the City. The shopping facilities as well as a wide choice of bars and restaurants are just a short walk away

Features

- One Double Bedroom
- Large Terrace
- Communal Gardens
- Immaculate Condition
- Chain Free
- Close to Common

Ambleside Avenue, London, SW16



Total area: approx. 60.4 sq. metres (650.5 sq. feet)