



Croft Road, SW16

£625,000

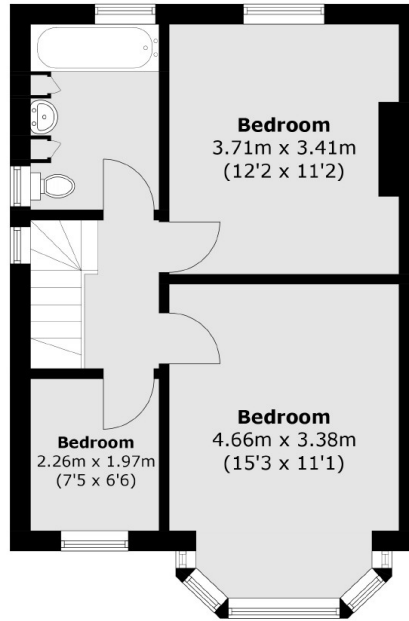
This three bedroom semi-detached family home has a bright reception room, large garden and off street parking. It also has a garage and potential to extend.

Croft Road is a quiet street surrounding Norwood Grove and the Rookery Gardens. This leafy part of Streatham has plenty of green open spaces to enjoy. You can access both Norbury and Streatham Stations which have access into London Victoria. Streatham High Road offers a great mix of pubs, shops and restaurants.

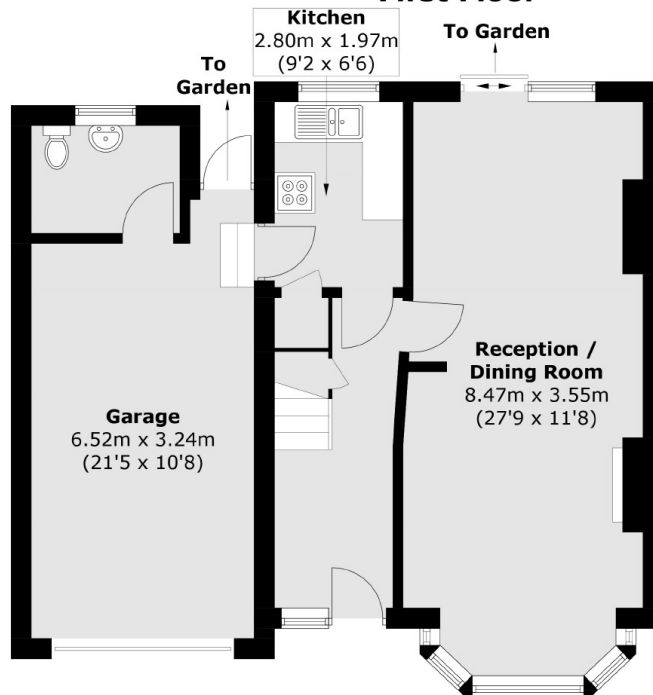
Features

- Three Bedrooms
- Large Garden
- Off Street Parking
- Over 1,200 Sq Ft
- Semi-Detached
- Garage

Croft Road,
London, SW16



First Floor



Ground Floor

Total area (approx.): 112.6 sq. m (1,212 sq. ft)
(Including Garage)

Dexters

Streatham
105 Streatham Hill
London
SW2 4UG
Sales
020 8674 7400

Energy Rating: D. We aim to make our particulars both accurate and reliable. However they are not guaranteed; nor do they form part of an offer or contract. If you require clarification on any points then please contact us, especially if you're traveling some distance to view. Please note that appliances and heating systems have not been tested and therefore no warranties can be given as to their good working order.

 **RICS** | Regulated
Estate Agent
and Letting Agent

dexters.co.uk