

Kingsmead Road, SW2

£750,000

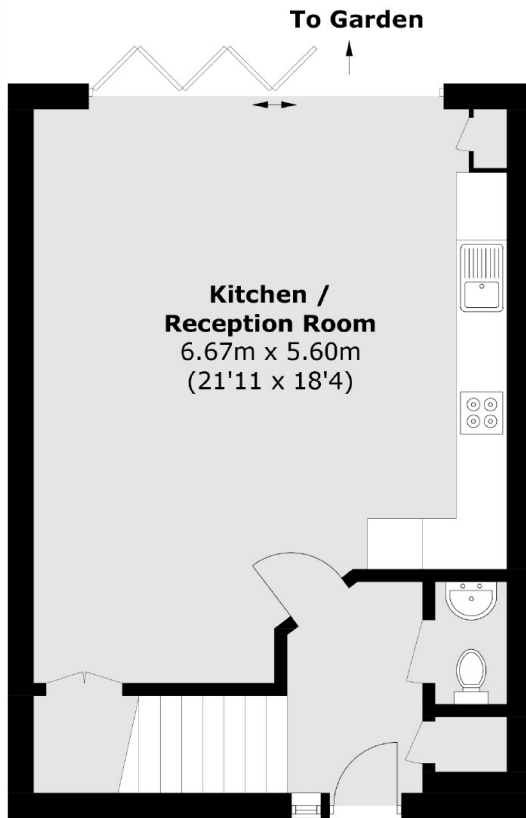
A private Mews property, tucked away behind electric gates each offering two double bedrooms, two bathrooms and large amounts of storage throughout. Each individually designed home has energy saving measures with low estimated running costs. EPC Rating A.

One of the most sought-after streets in the Streatham Hill/Tulse Hill area, perfectly positioned for both Streatham & Dulwich High streets and within easy reach of Tulse Hill station providing fast rail links to the city. The green open spaces at Brockley park are also nearby.

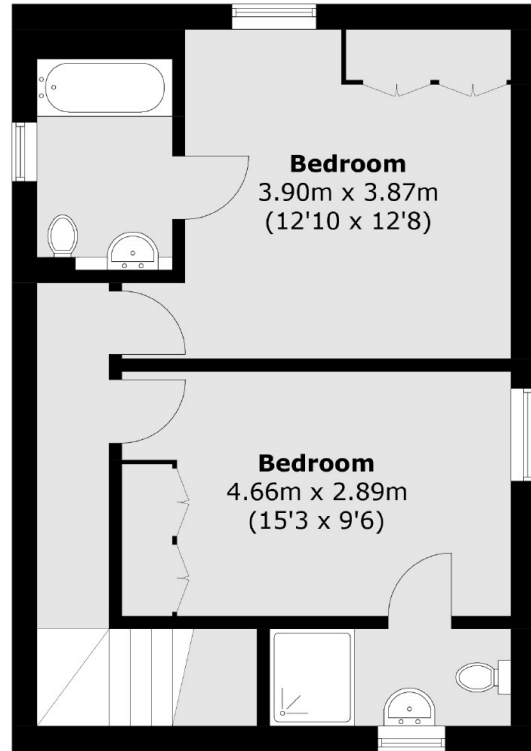
Features

- Open Plan Kitchen/Reception
- Two Double Bedrooms
- Two Large Bathrooms
- EPC Rating A
- Large Private Garden
- Gated Private Mews

Kingsmead Road,
London, SW2



Ground Floor



First Floor

Total area (approx.): 92.3 sq. m (993.5 sq. ft)

Dexters

Streatham
105 Streatham Hill
London
SW2 4UG
Sales
020 8674 7400

Energy Rating: . We aim to make our particulars both accurate and reliable. However they are not guaranteed; nor do they form part of an offer or contract. If you require clarification on any points then please contact us, especially if you're traveling some distance to view. Please note that appliances and heating systems have not been tested and therefore no warranties can be given as to their good working order.

 **RICS** | Regulated
Estate Agent
and Letting Agent

dexters.co.uk