



**Strathbrook Road, SW16**

**£825,000**

**Dexters**



## Strathbrook Road, SW16

Stylishly designed throughout is this four bedroom family home. Downstairs is a large front reception painted in a statement colour to feel cosy and secluded. To the rear of this lovely home is the open and bright kitchen/ diner with bi-fold doors onto the landscaped garden. At the back of the garden is a great space housing a shed and a play area for children.

Upstairs are three well-proportioned bedrooms and a family bathroom. On the top floor is a large bedroom with en-suite and plenty of eaves storage, ideal for a main bedroom or guest bedroom. There is also a reading nook at the top of the stairs where you can admire the view down the street. This is an ideal family home with side access and landscaped front garden.

The property is located on the charming Strathbrook Road - a prime residential street in the heart of Streatham common. Mainline rail links are nearby with direct links into the City as are the open spaces of Streatham Common and the Rookery.

### Features

- Four Bedrooms
- Spacious Front Garden
- Large Garden
- Side Access
- Stylish Design
- Open Kitchen/Diner

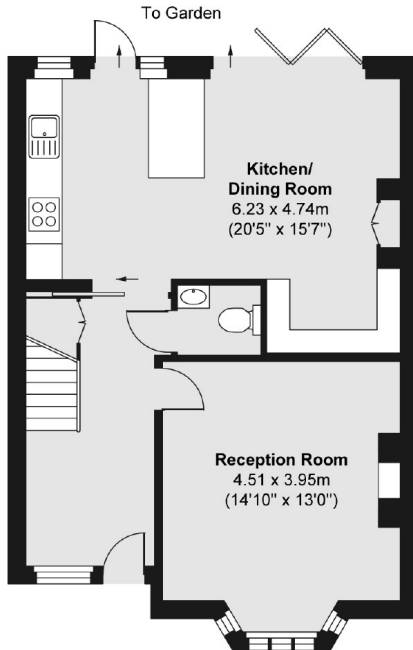




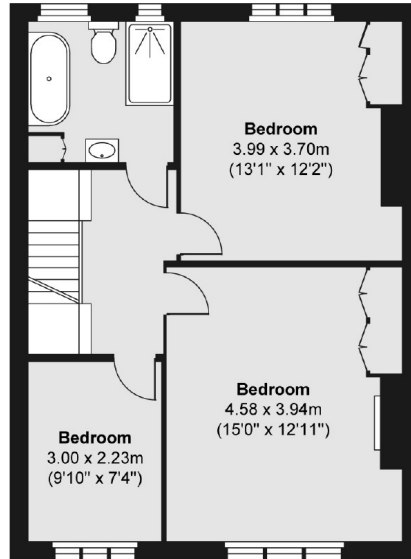


# Strathbrook Road, London, SW16

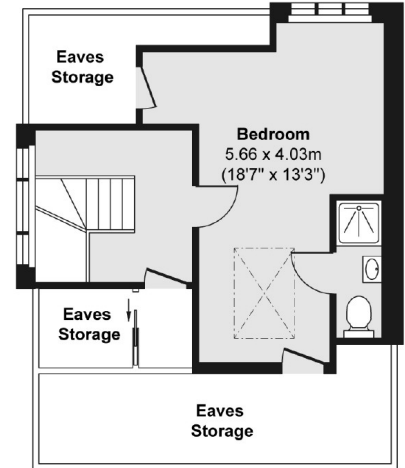
Ground Floor



First Floor



Second Floor



Total area (approx.) 132.94 sq. m (1,431 sq. ft)