



## Conyers Road, SW16

£399,000

Located on the top floor of this period property is this bright two double bedroom flat. The living accommodation is spacious and offers a great lounging area. This home also has the added benefit of no onward chain.

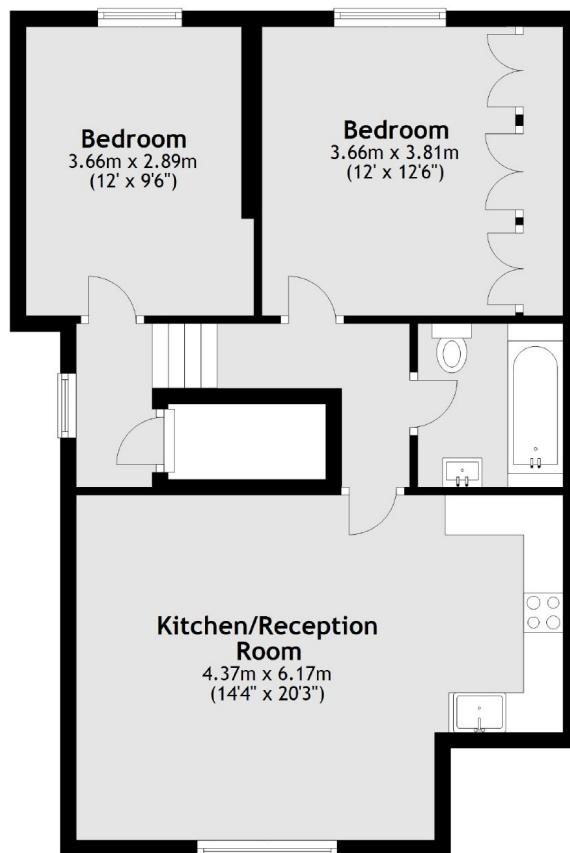
Situated between Streatham and Furzedown this property on Conyers Road is a short walk from Streatham Station which is on the Thameslink Service as well as Streatham Common Station providing access to London Victoria. Tooting Bec Common is also nearby which contains the Lido.

### Features

- Two Double Bedrooms
- No onward chain
- Open-Plan Living
- Top Floor Flat
- Bright Space
- Great Location

Conyers Road,  
London, SW16

### Second Floor



Total area: approx. 60.4 sq. metres (650.2 sq. feet)