



Broxholm Road, SE27  
£595,000

**Dexters**



## Broxholm Road, SE27

Unique to the area is the large, charming period two double bedroom property. This home is spacious throughout and features an internal staircase which provides a great entrance hall to this grand flat. Upstairs there are two double bedrooms as well as a bright, front facing reception with feature bay window.

To the rear of the property is the kitchen diner as well as bathroom which leads through to the mature rear garden. At over 1,000sqft with an extra storage cupboard as well as owning the loft space, this property really does have all the space you need.

Broxholm Road is located on the borders of Streatham and West Norwood and provides easy access to both Streatham Hill mainline station with links to London Victoria and Streatham High Road with its vast array of Shopping and leisure amenities. Tulse Hill station is nearby offering transport into London Bridge and Blackfriars via the Thameslink service.

### Features

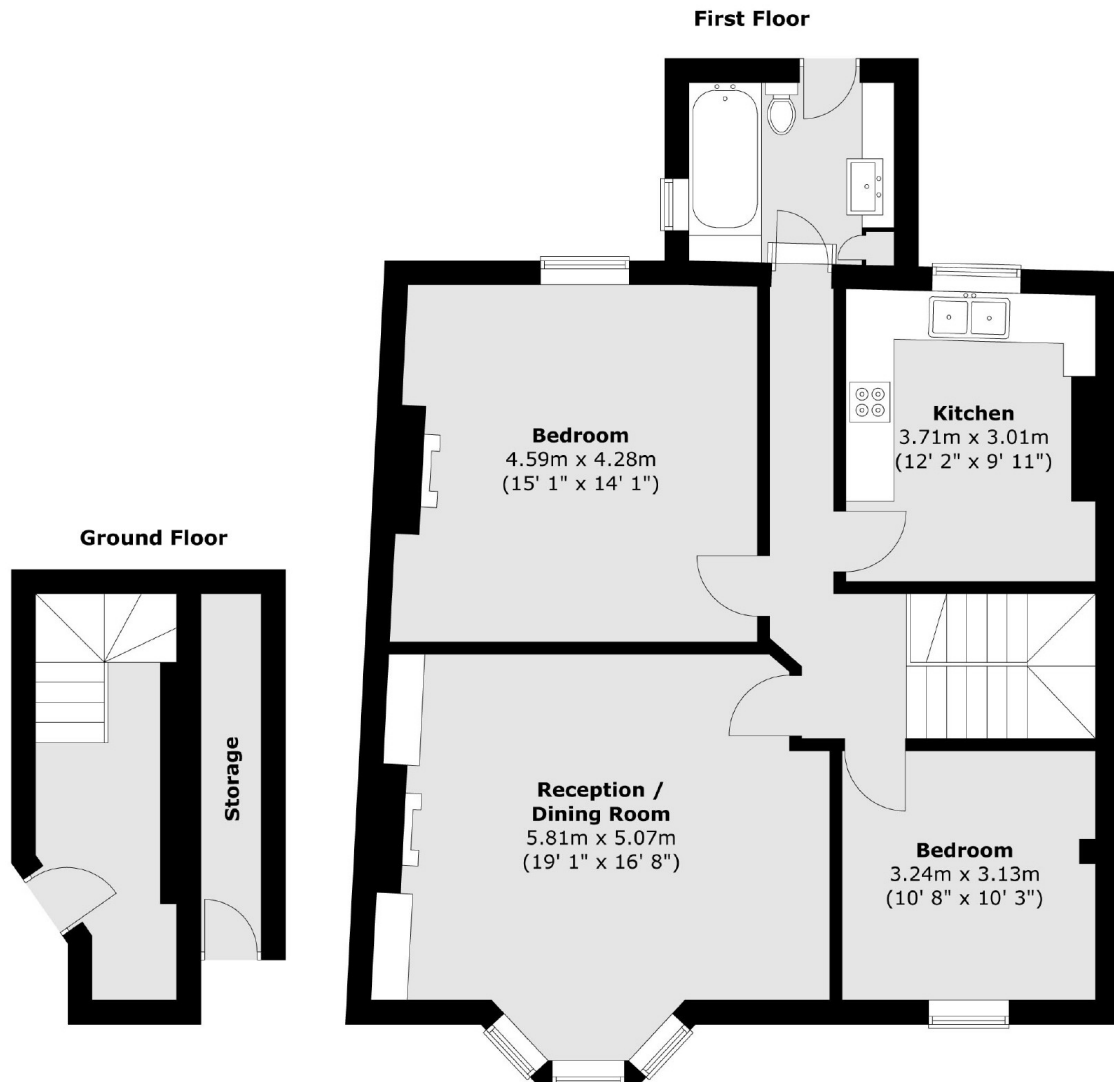
- Two Double Bedrooms
- Private Garden
- Over 1,000sqft
- Chain Free
- Separate Kitchen/Diner
- Bright Flat







Broxholm Road,  
London, SE27



Total area (approx.) : 93.6 sq. m (1007 sq. ft)  
Storage Cupboard (approx.) : 3.3 sq. m (35 sq. ft)