



Kettering Street, SW16

£425,000

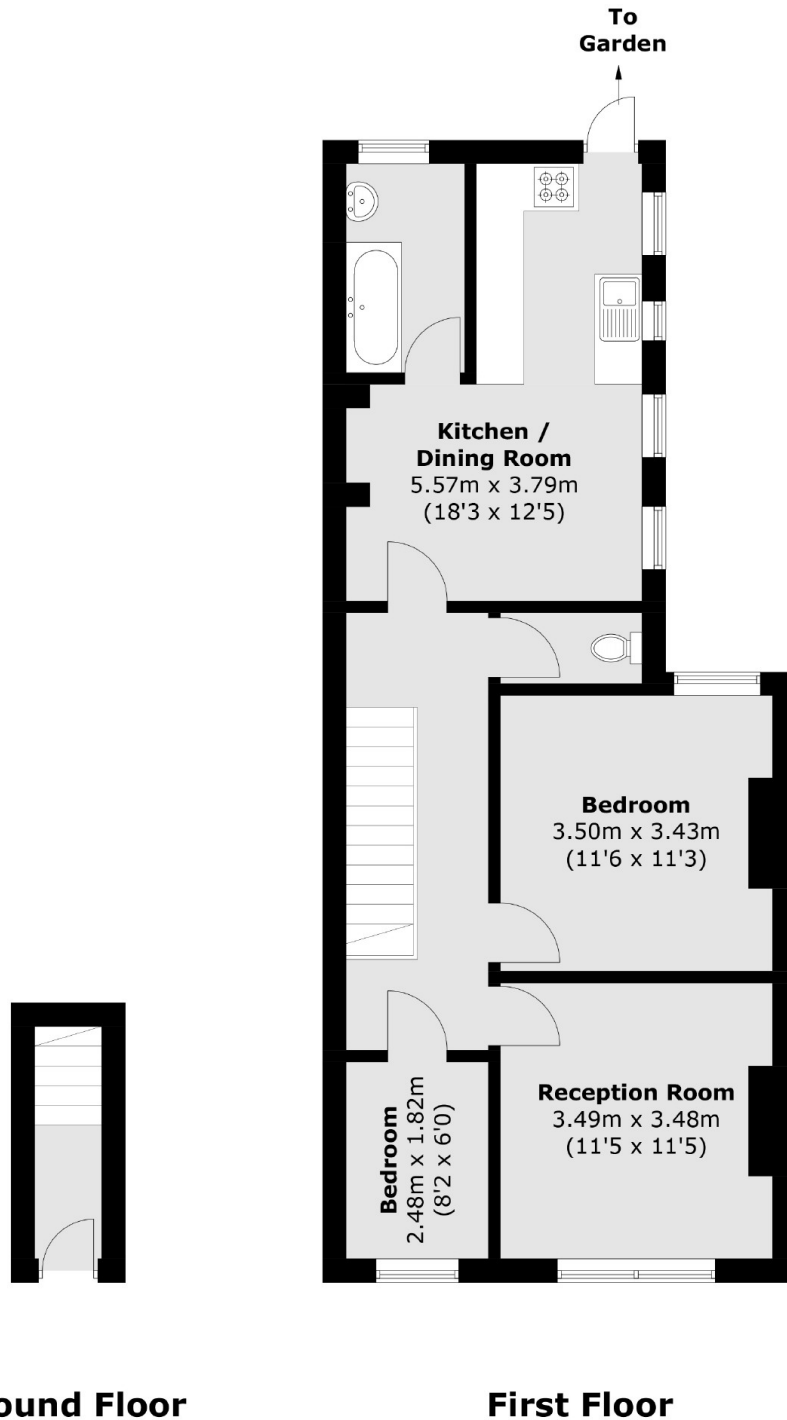
A two bedroom first floor maisonette in good condition. This home is well maintained throughout and has direct access onto the large private garden.

Kettering Street is a quiet residential street offering easy access to Tooting Broadway and Streatham Common Stations, the latter which has regular services into London Victoria via Clapham Junction and also London Bridge. It's also a short walk to Furzedown, and its cafes and shops on Moyser Road and excellent schools. Both Streatham and Tooting Bec Commons are also nearby.

Features

- Two Bedrooms
- Private Garden
- Good Condition
- Own Front Door
- Plenty of Storage
- Close to Station

Kettering Street,
London, SW16



Total area (approx.): 66.6 sq. m (716.9 sq. ft)

Dexters

Streatham
105 Streatham Hill
London
SW2 4UG
Sales
020 8674 7400

Energy Rating: C. We aim to make our particulars both accurate and reliable. However they are not guaranteed; nor do they form part of an offer or contract. If you require clarification on any points then please contact us, especially if you're traveling some distance to view. Please note that appliances and heating systems have not been tested and therefore no warranties can be given as to their good working order.

 **RICS** | Regulated
Estate Agent
and Letting Agent

dexters.co.uk