



Hilldown Road, SW16

£450,000

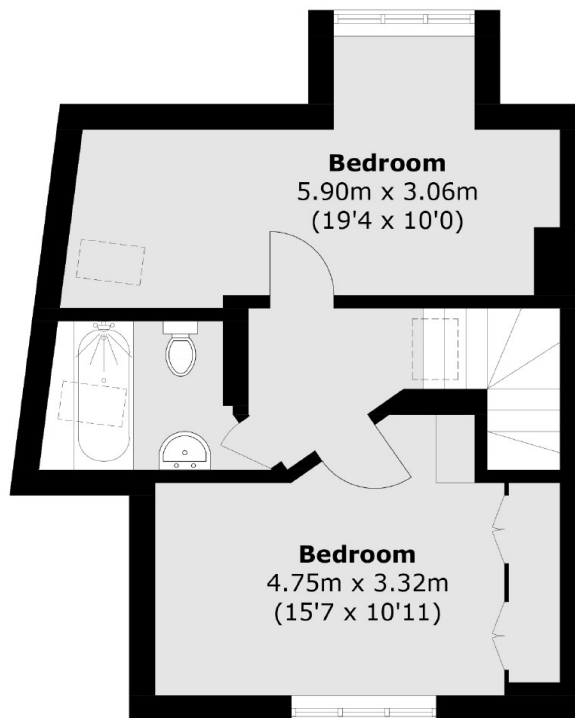
This well proportioned split level flat offers a bright living room with large bay window and separate kitchen. On the top floor are two similar sized double bedrooms and family bathroom.

Hilldown Road is a prime street in the Braxted Park conservation area and is close to Streatham Common. The property is located between Streatham and Norbury Station providing links into London Victoria via Clapham Junction and London Bridge, as well as many bus routes on Streatham High Road.

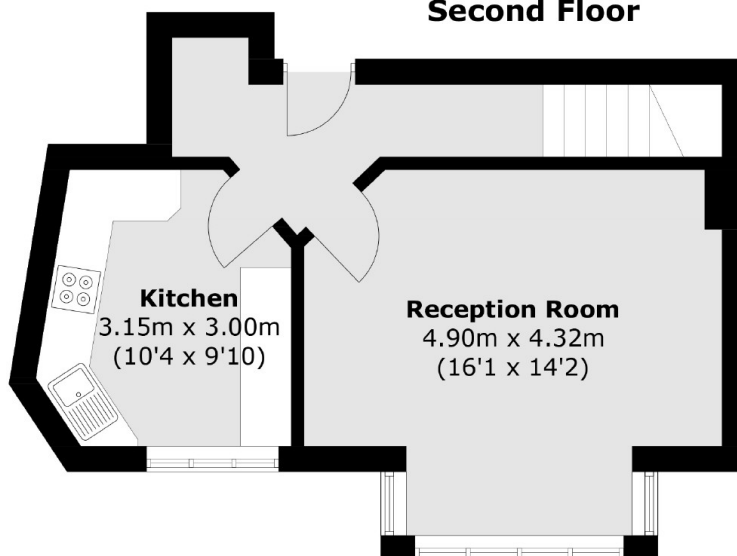
Features

- Two Double Bedrooms
- Split Level
- Top Floor
- Share of Freehold
- Great Location
- Close to Transport

Hilddown Road, London, SW16



Second Floor



First Floor

Total area (approx.): 73.1 sq. m (786.9 sq. ft)