



Lydhurst Avenue, SW2

£525,000

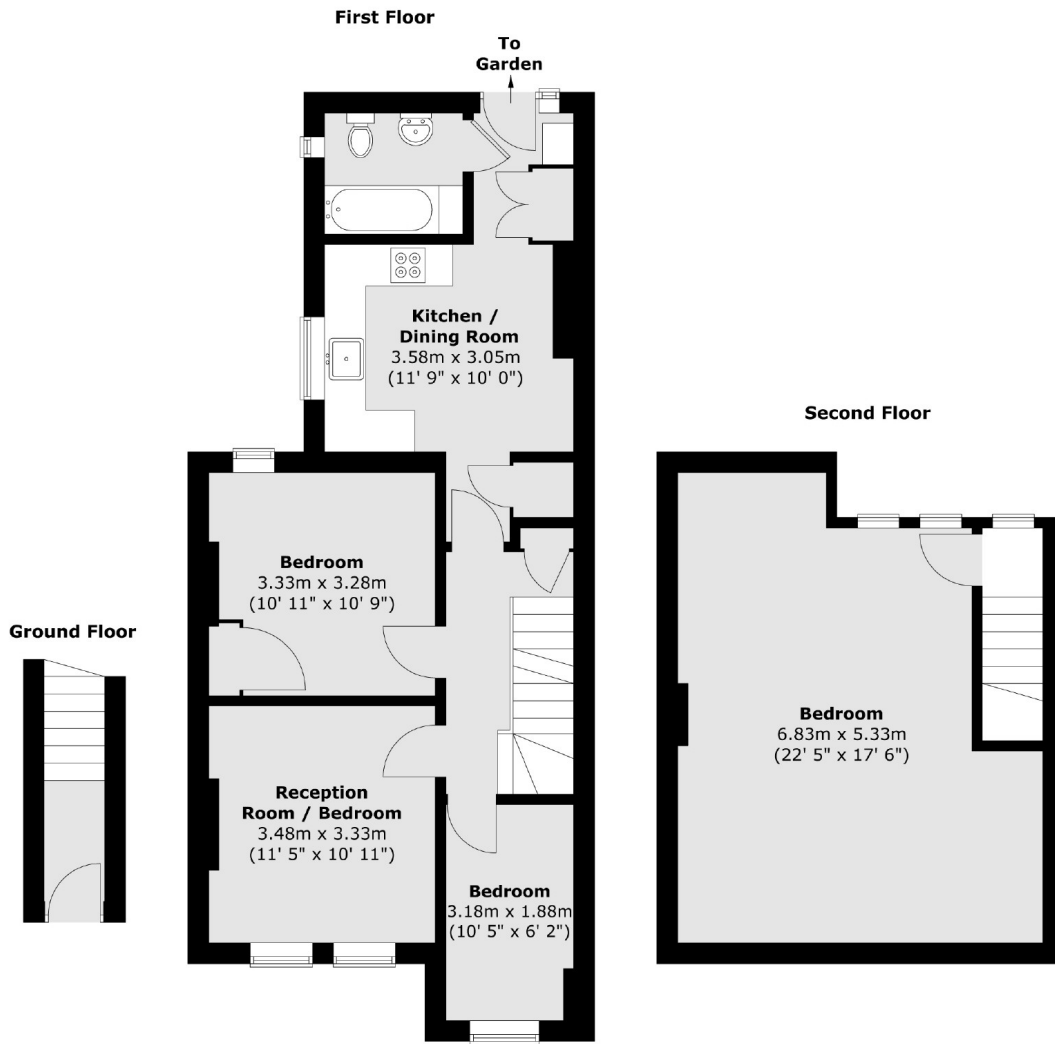
Greeted from the ground floor, this first and second floor maisonette consists of three bedrooms, living room, large kitchen/diner and bathroom plus well sized private garden. Well decorated throughout this home is perfect for a first time buyer looking to make their own mark on large flat in the heart of Streatham Hill.

Lydhurst Avenue is fantastically positioned to offer you the best of Streatham living. Streatham town centre and Streatham Hill's mainline station, providing easy access to London Victoria via Clapham Junction. Local shops, bars, and restaurants are within easy reach, ensuring that you're never far from the action. Plus, nearby Tulse Hill station is part of the Thameslink service to London Bridge and Blackfriars.

Features

- Three Bedrooms
- Private Garden
- Own Front Door
- Chain Free
- Close to Station
- Separate Reception

Lydhurst Avenue, London, SW2



Total area (approx.) : 96.4 sq. m (1037 sq. ft)