



Crescent Way, SW16

£1,100,000

Dexters



Crescent Way, SW16

This large well conditioned semi-detached family home consists of five double bedrooms over three floors on Crescent Way close to Streatham Common.

Greeted with a driveway and garage on the spacious plot, well sized entrance for storage on the ground floor consisting of two reception rooms and kitchen leading out to the large garden.

Upstairs on the first floor consists of three bedrooms, of which one has an immaculate en suite, plus a main bathroom for the family.

On the top floor, there are two double bedrooms, with a separate bathroom catered to them both, one of which have large velux windows showing great views of south west and the other with large bi folding doors facing east for lovely views of the garden in the morning.

Crescent Way is a quiet street close to Rookery Gardens and Streatham Common. While located in the more leafier part of Streatham, you still have easy access to both Norbury and Streatham Stations which have trains into London Victoria and London Bridge. Streatham High Road offers a great mix of pubs, shops and restaurants.

Features

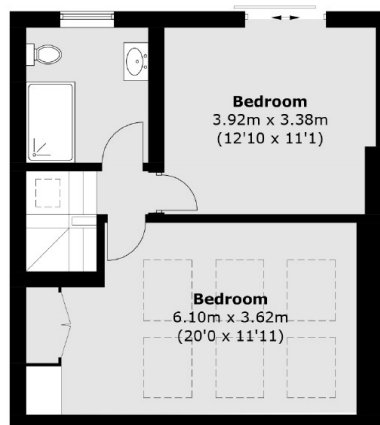
- Five Double Bedrooms
- Semi-Detached House
- Drive Way and Garage
- Large Garden
- Good Condition
- Good Transport



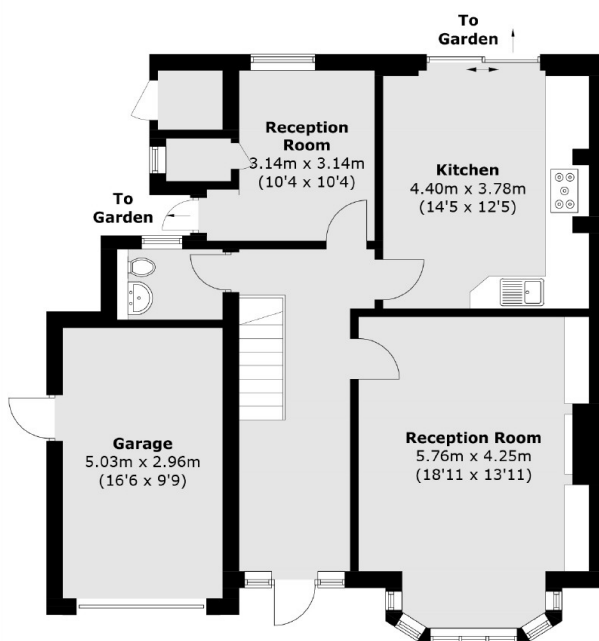




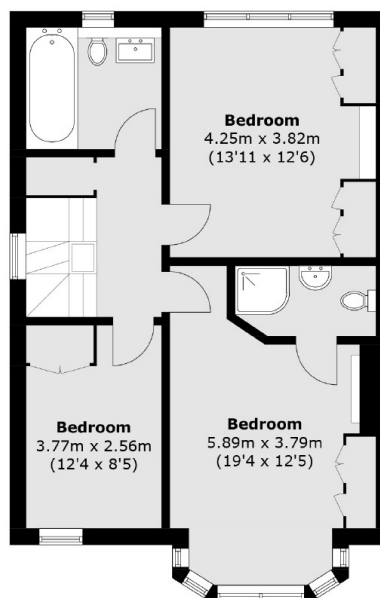
Crescent Way, London, SW16



Second Floor



Ground Floor



First Floor

Total area (approx.): 177.9 sq. m (1,914.9 sq. ft)
Garage (approx.): 14.9 sq. m (160.4 sq. ft)