



Eardley Road, SW16

£485,000

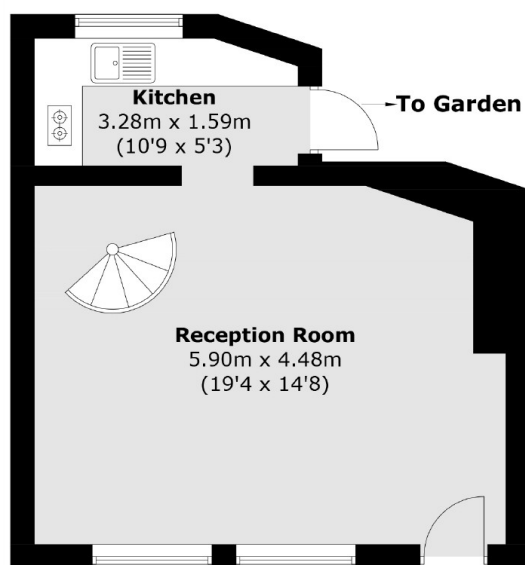
In immaculate condition throughout, is this three bedroom, freehold house offered with no onward chain. On the ground floor is a large bright reception leading through to the modern separate kitchen and private outside space. Upstairs via the spiral staircase are three bedrooms and a family bathroom, with one room currently being used as a walk-in wardrobe.

Eardley Road is in the midst of access routes into Clapham Junction, London Victoria and London Bridge via Streatham Common and Streatham Station. Tooting Bec Common and Streatham Common are short walks away.

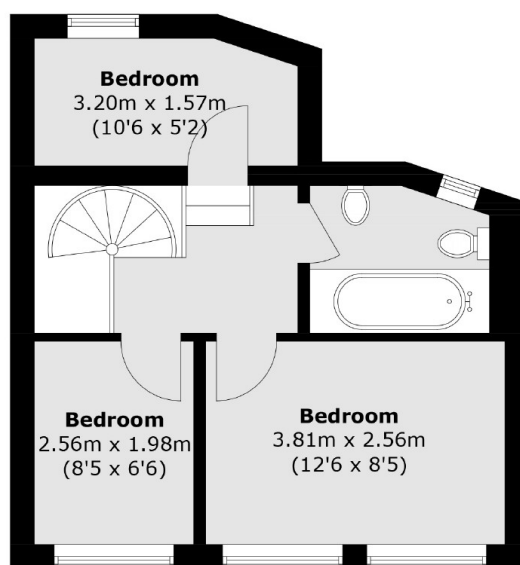
Features

- Three Bedrooms
- Large Living Area
- Separate Kitchen
- Outside Space
- Immaculate Condition
- Freehold House

Eardley Road,
London, SW16



Ground Floor



First Floor

Total area (approx.): 63.5 sq. m (683.4 sq. ft)