



## Conyers Road, SW16

£625,000

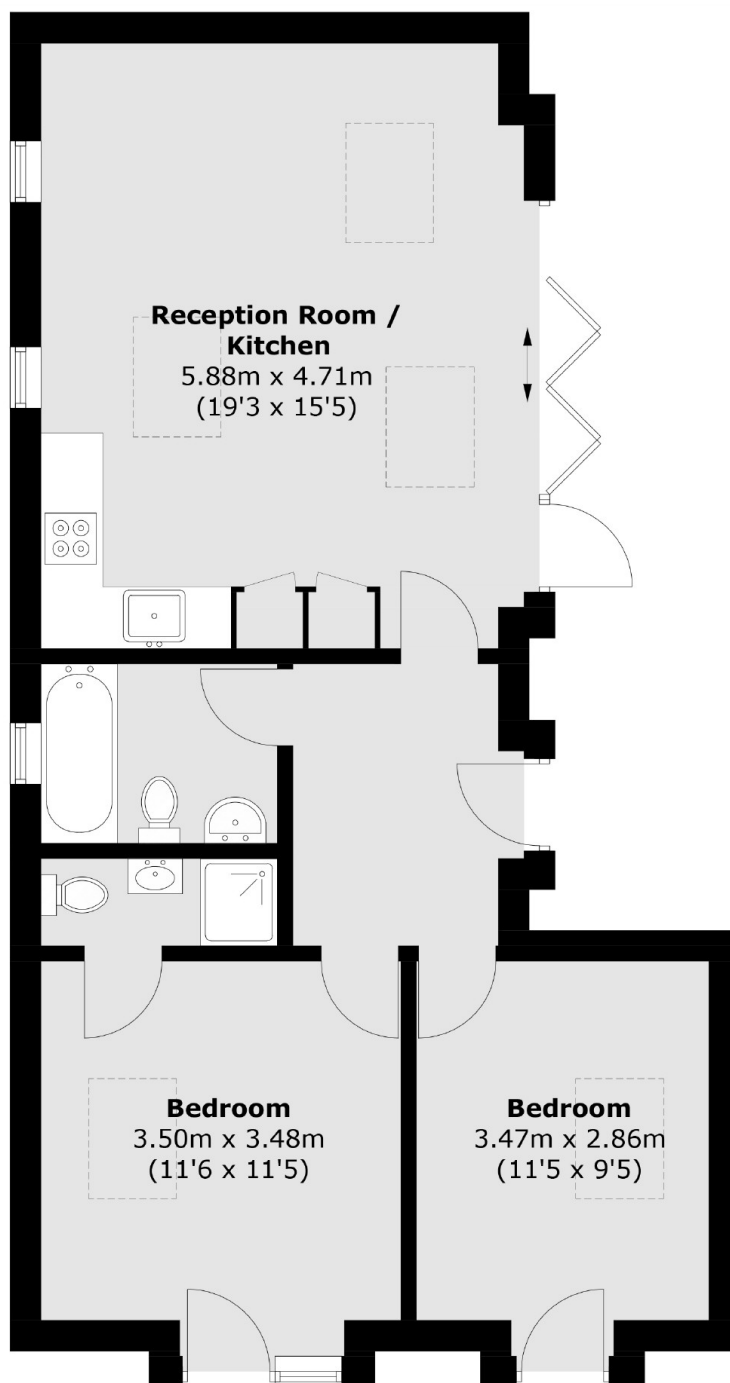
A very unique freehold family home. In a safe and secure location on a residential street this property has two bedrooms and two bathrooms as well as a large private garden.

Conyers Road is just a short walk from Streatham station and town centre with trains providing Southern and Thames link services with direct access into London. The green open spaces of Streatham Common with The Rookery Gardens as also very nearby.

### Features

- Two Bedrooms
- Freehold Detached Home
- Close To Station/Shops
- High Specification
- Private Rear Gardens
- 10 Year Build Warranty

# Conyers Road, Streatham, SW16



Total area (approx.): 65.8 sq. m (708.3 sq. ft)