



Ambleside Avenue, SW16

£1,650 Per calendar month

This recently decorated first floor flat has been finished to a modern standard throughout. Offering a good sized double bedroom, modern kitchen and private garden. This property is perfect for the single professional or couple.

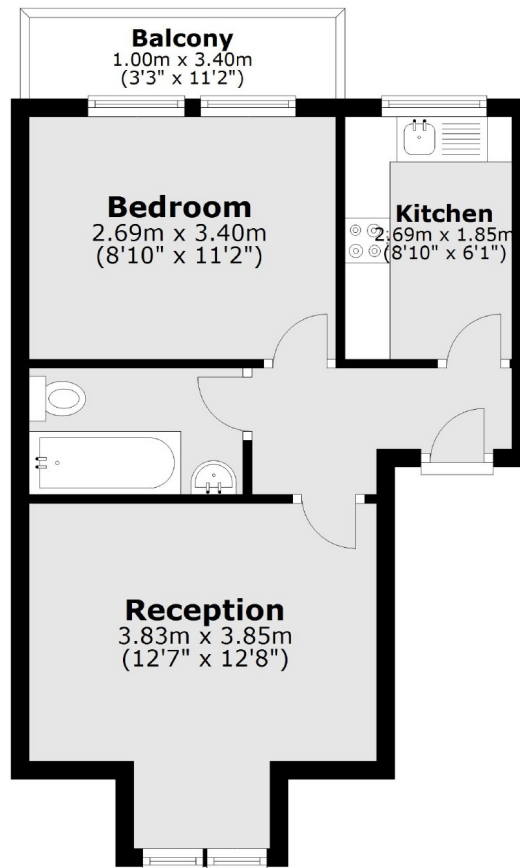
Ambleside Avenue is situated in the highly sought-after Streatham Park Conservation area close to Tooting Bec Common. Streatham mainline station is situated close by, which has quick links to the City. The shopping facilities as well as a wide choice of bars and restaurants are just a short walk away.

Features

- One Double Bedroom
- Modern Kitchen
- Modern Bathroom
- Recently Decorated
- Private Garden
- Prime Location

Ambleside Avenue,
London, SW16

First Floor



Total area: approx. 34.5 sq. metres (371.7 sq. feet)