



Arborfield Close, SW2

£375,000

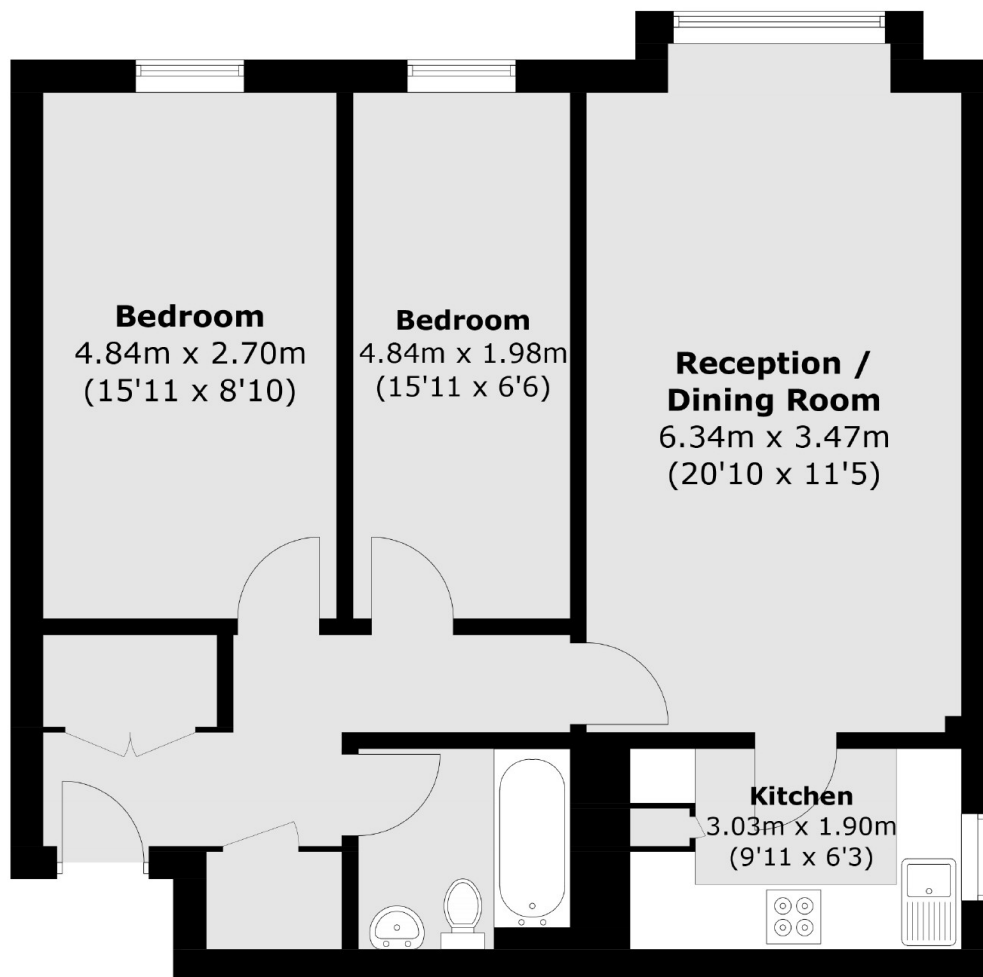
Neutrally decorated throughout is this two double bedroom property with large living area, separate kitchen and plenty of storage throughout. This is an ideal step onto the property ladder and there is an added bonus of a communal garden and parking space.

Bordering Brixton and Streatham, Arborfield Close is perfectly placed for both town centres where you will find a vast array of shops, bars and restaurants. Local bus routes provide a quick route to Brixton Tube station with Streatham Hill and Tulse Hill Mainlines also close at hand.

Features

- Two Double Bedrooms
- Family Bathroom
- Separate Kitchen
- Good Condition
- Parking Space
- Modern Bathroom

Arborfield Close,
London, SW2



Second Floor

Total area (approx.): 66.4 sq. m (714.7 sq. ft)