



Ellison Road, SW16

£450,000

A beautifully presented three bedroom period property with a communal garden. Internally the property has been finished to an excellent standard and has a large kitchen/diner and modern family bathroom.

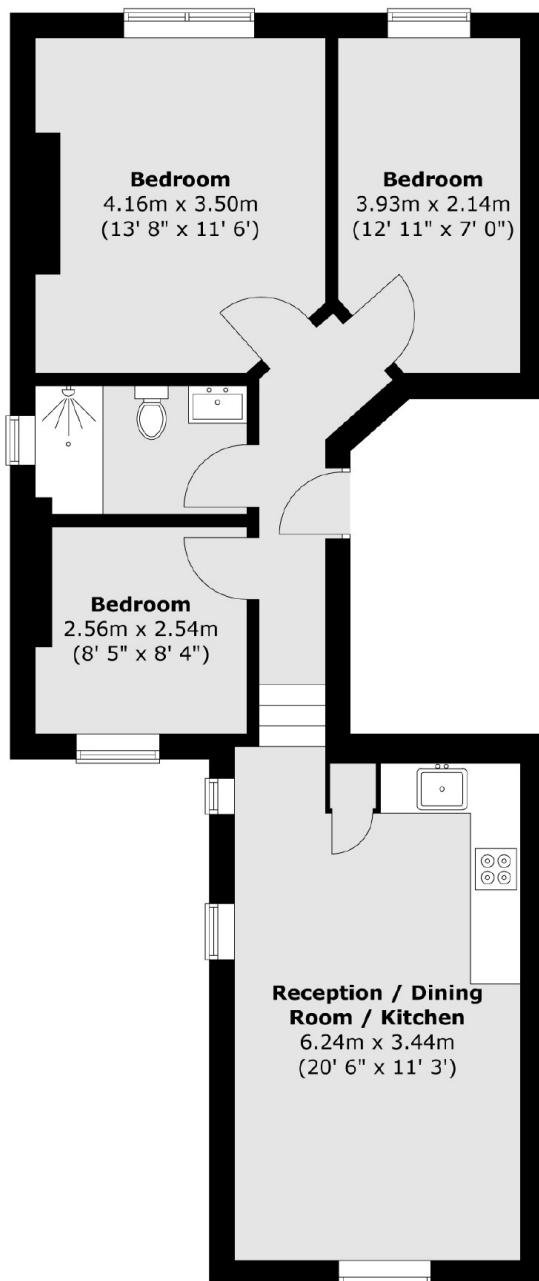
Ellison Road is a popular location for commuters being just a short distance away from Streatham Common Station with its frequent services to London Bridge and Victoria.

Features

- Communal Garden
- Convenient Location
- Period Property
- Immaculate Condition
- Over 650 Sq Ft
- Three Bedrooms

Ellison Road, London, SW16

First Floor



Total area (approx.) : 60.5 sq. m (651 sq. ft)