



## Streatham Hill, SW2

£495,000

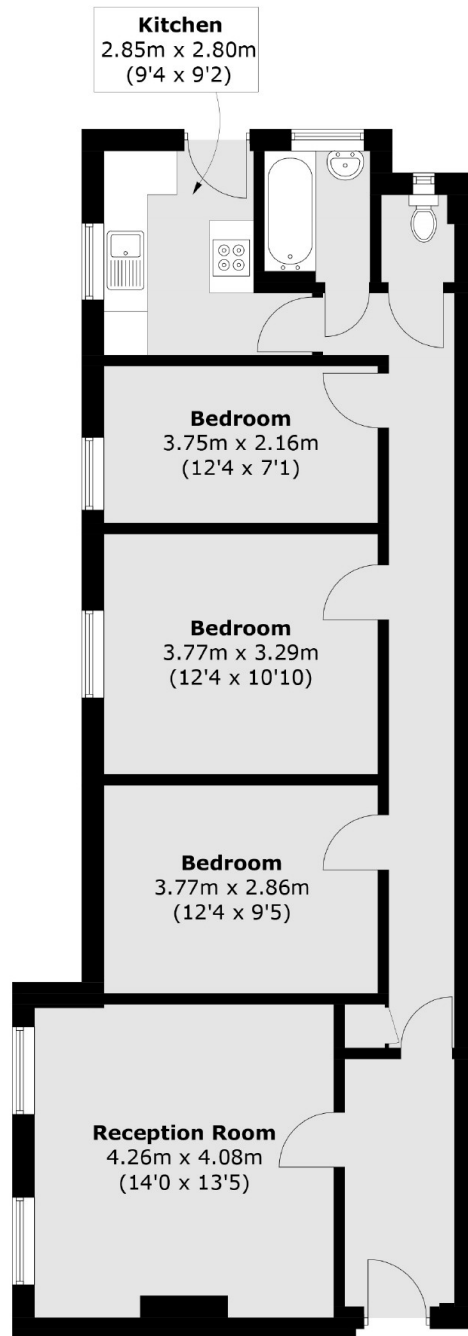
This three double bedroom apartment is a great first time buy. The property is located on Streatham Hill moments away from Streatham Hill Station. It benefits from a large living room, three double bedrooms, a roof terrace and communal gardens offered to the market chain free.

Telford Court is located on Streatham Hill, with Streatham Hill Station moments away, providing links to Clapham Junction and London Victoria. Transport links to Brixton are also on the doorstep. Local shops and restaurants are also within easy reach.

### Features

- Communal Gardens
- Over 860 Sq Ft
- Three Double Bedrooms
- Convenient Location
- Parking
- No Chain

# Streatham Hill, London, SW2



Total area (approx.): 80.2 sq. m (863.3 sq. ft)