



**Lewin Road, SW16**

£675,000

**Dexters**



## Lewin Road, SW16

Spanning the entire ground floor and measuring over 1,100 Sq Ft, the accommodation is presented in excellent condition throughout. Arranged around a lengthy hallway providing access to a useful cellar space, the three bedrooms are of a good-size and are well served by a stylish en-suite shower room and modern family bathroom/WC.

The rear of the property has been fully extended to offer a sizeable kitchen reception which is spacious and light thanks to bi-fold doors which lead directly on to the garden. It is well designed and together with space for a dining table enables ample living and entertaining space. The property's specific position on the street means it has a lovely open, yet private feel to the garden, it is large, wide and receives sun all day long as well as side access which could be used as a private entrance.

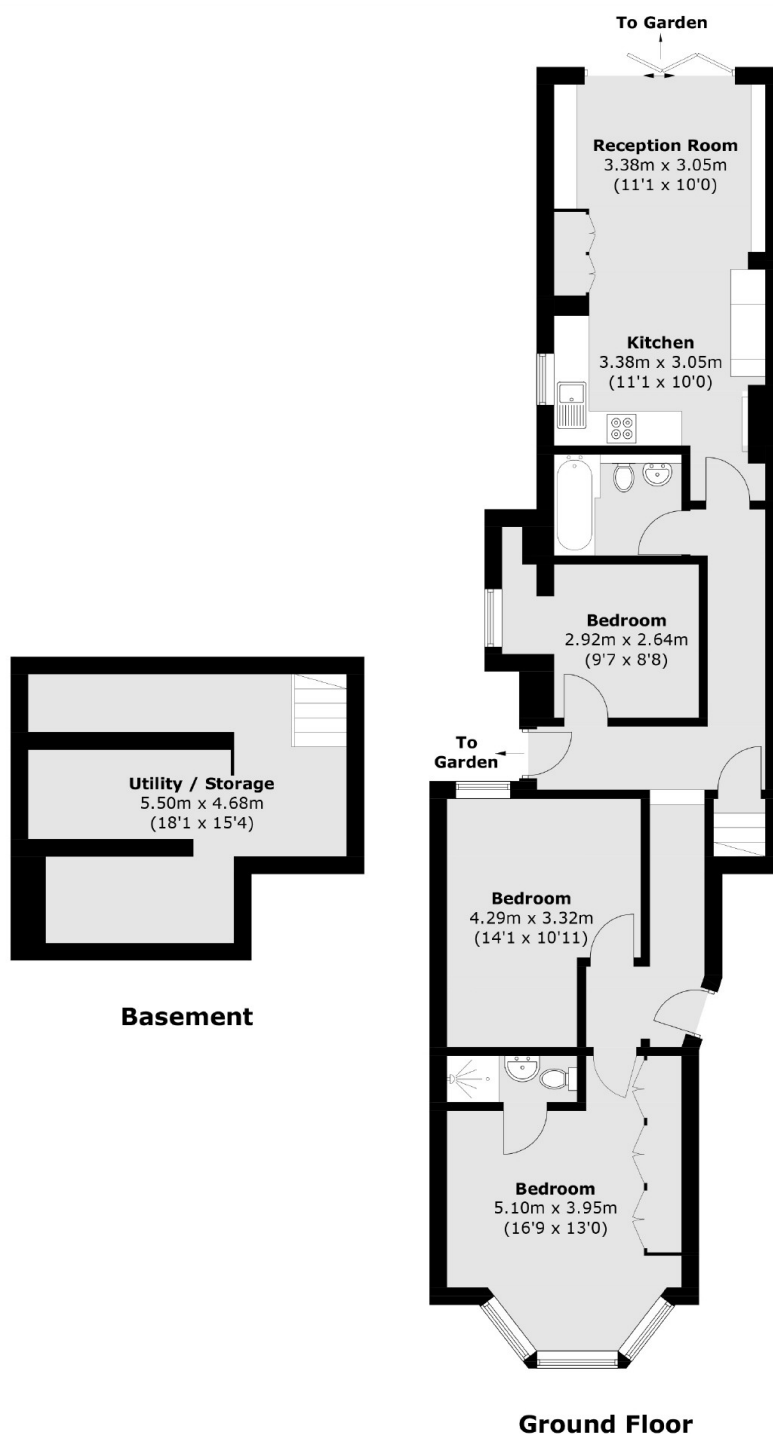
Lewin Road runs immediately off Streatham High Road, with its bars, restaurants and shopping. Streatham Common and the Rookery are only a short walk away with direct rail services into the City from both Streatham and Streatham Common stations.

### Features

- Over 1,100sqft
- Extended Kitchen / Reception
- Three Bedrooms
- Two Bathrooms
- Private Garden
- Share Of Freehold



# Lewin Road, London, SW16



Total area (approx.): 109.4 sq. m (1,177.6 sq. ft)