



Lewin Road, SW16
£695,000

Dexters



Lewin Road, SW16

Spanning the entire ground floor and measuring over 1,100 Sq Ft, the accommodation is presented in excellent condition throughout. Arranged around a lengthy hallway providing access to a useful cellar space, the three bedrooms are of a good-size and are well served by a stylish en-suite shower room and modern family bathroom/WC.

The rear of the property has been fully extended to offer a sizeable kitchen reception which is spacious and light thanks to bi-fold doors which lead directly on to the garden. It is well designed and together with space for a dining table enables ample living and entertaining space. The property's specific position on the street means it has a lovely open, yet private feel to the garden, it is large, wide and receives sun all day long as well as side access which could be used as a private entrance.

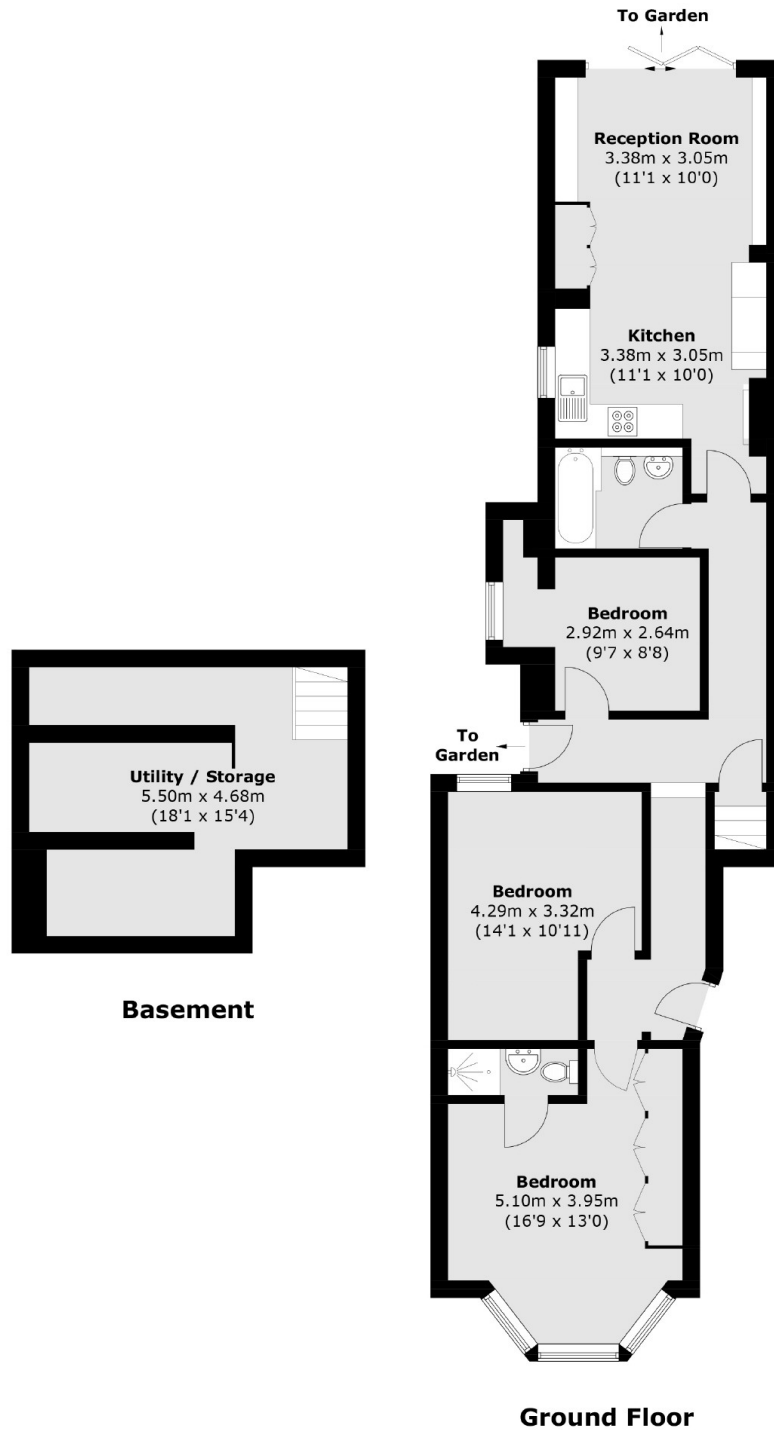
Lewin Road runs immediately off Streatham High Road, with its bars, restaurants and shopping. Streatham Common and the Rookery are only a short walk away with direct rail services into the City from both Streatham and Streatham Common stations.

Features

- Over 1,100sqft
- Extended Kitchen / Reception
- Three Bedrooms
- Two Bathrooms
- Private Garden
- Share Of Freehold



Lewin Road,
London, SW16



Total area (approx.): 109.4 sq. m (1,177.6 sq. ft)

Dexters

Streatham
105 Streatham Hill
London
SW2 4UG
Sales
020 8674 7400

Energy Rating: C. We aim to make our particulars both accurate and reliable. However they are not guaranteed; nor do they form part of an offer or contract. If you require clarification on any points then please contact us, especially if you're traveling some distance to view. Please note that appliances and heating systems have not been tested and therefore no warranties can be given as to their good working order.

 **RICS** | Regulated
Estate Agent
and Letting Agent

dexters.co.uk