



Oakdale Road, SW16

£614,000

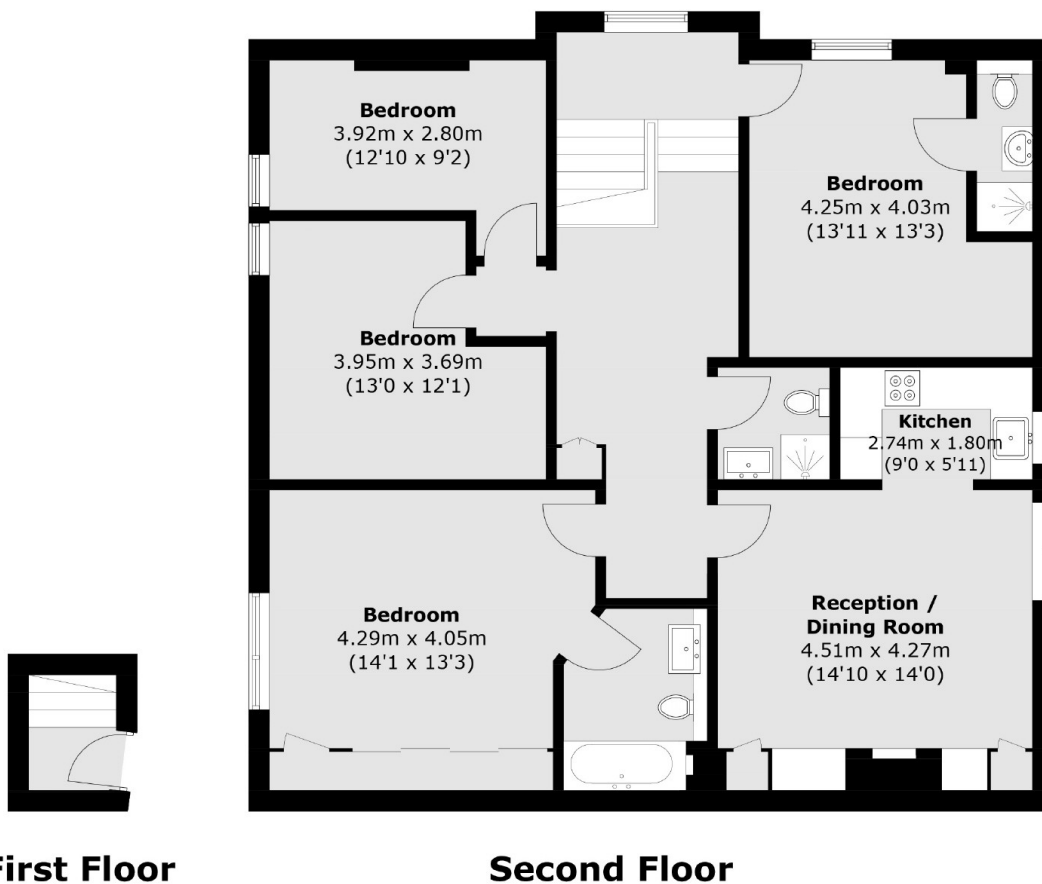
A completely architecturally designed, recently refurbished 3 bedroom, 2 reception apartment with an expansive shared garden, occupying the entire top floor of an elegant double fronted period property, moments from Streatham mainline station and Streatham Common.

Oakdale Road is a tree-lined residential street and is perfectly positioned within close proximity to Streatham High Road and is within easy access of transport links at Streatham Station offering fast connections to London Bridge and Blackfriars. The open spaces of Streatham Common are also nearby.

Features

- Four Double Bedrooms
- Over 1,200 Sq Ft
- Three Bathrooms
- Large Reception Room
- Communal Garden
- Newly Refurbished

Oakdale Road, London, SW16



Total area (approx.): 117.0 sq. m (1259.4 sq. ft)