



## Palace Road, SW2

£475,000

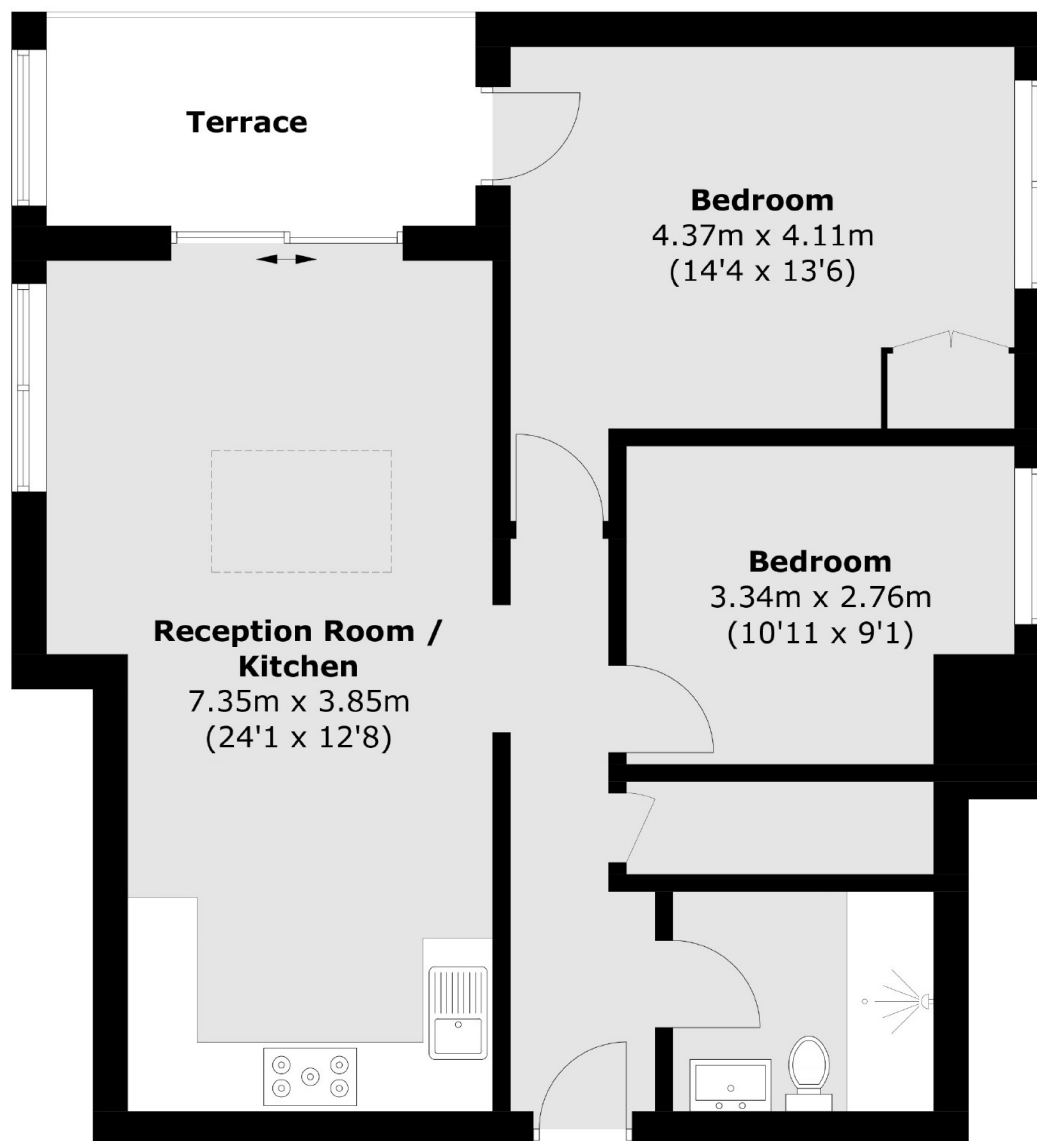
This fantastic flat has plenty of space with a large open-plan living room leading onto the private balcony. This home has a modern kitchen and bathroom as well as two bedrooms. The communal grounds are a great bonus.

Palace Road is a sought after street moments from Tulse Hill station for rail links serving London Bridge and frequent bus routes to Brixton and Clapham as well as Brixton underground station (Victoria Line). It is also close to Streatham Hill Station which has direct links to Victoria. It is perfectly placed and has a good choice of bars, restaurants and shops along Norwood Road and Streatham Hill.

### Features

- Private Balcony
- Convenient Location
- Two Bedrooms
- Modern Development
- Open Plan Kitchen/Living Room
- Shared Garden

Palace Road,  
London, SW2



Total area (approx.): 65.1 sq. m (700.7 sq. ft)  
Terrace area : 6.7 sq. m (72.1 sq. ft)