



Deerhurst Road, SW16

£1,250,000

Dexters



Deerhurst Road, SW16

Completely renovated by the current owners is this stunning four double bedroom family home. Located on a quiet residential street, this property sits up from the road and has a grand entrance hall.

The ground floor has a large reception room as well as an incredible open plan kitchen/diner, leading through to conservatory which opens up onto the charming rear garden. Upstairs there are four large bedrooms with one-ensuite and a modern family bathroom, these all lead off the large upstairs landing.

The house is perfect for family living and comes with a separate utility with downstairs w/c which has side access. The property is also moments away from the green open space of Streatham Common which houses the Rookery and a great park for children.

Situated off Streatham Common, Deerhurst Road is half a mile from Streatham Station which has fast services into both London Bridge and Blackfriars. Streatham High Road offers numerous restaurants, bars and shopping facilities.

Features

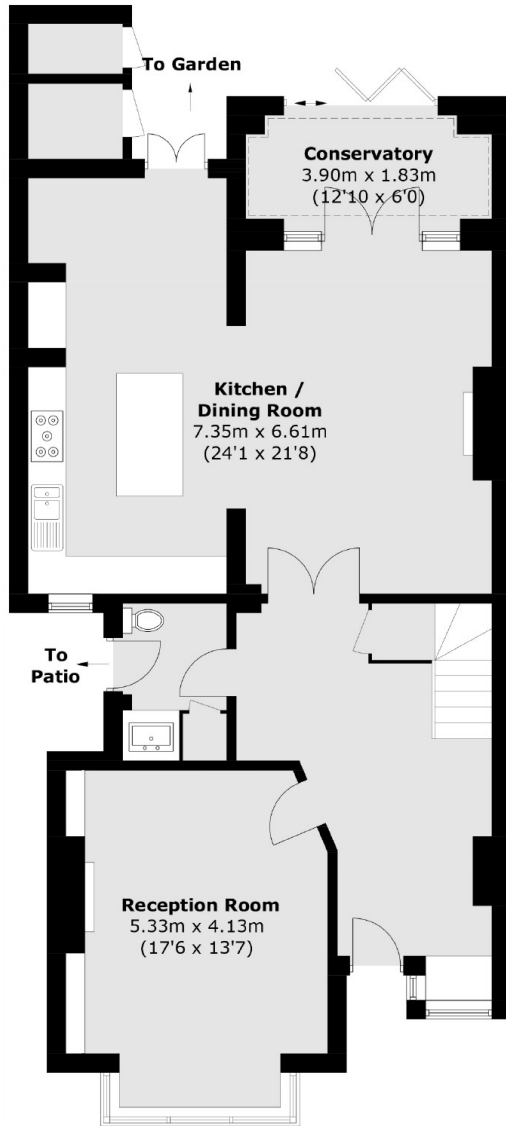
- Semi-Detached
- Potential to Extend
- Sought After Location
- Period Features
- Four Bedrooms
- Large Kitchen/Dining Room







Deerhurst Road, London, SW16



Ground Floor



First Floor

Total area (approx.): 191.6 sq. m (2,062.4 sq. ft)
External Storage (approx.): 3.2 sq. m (34.4 sq. ft)