



Buckleigh Road, SW16
£500,000

Dexters



Buckleigh Road, SW16

Arranged over two floors, this light and spacious upper flat benefits from a large eat-in kitchen and a spacious reception room.

All three bedrooms are of a good size served by a family bathroom and a separate WC on the second floor. With further benefits including a delightful, private south facing garden with functioning summer house. The property is also being sold with no onward chain.

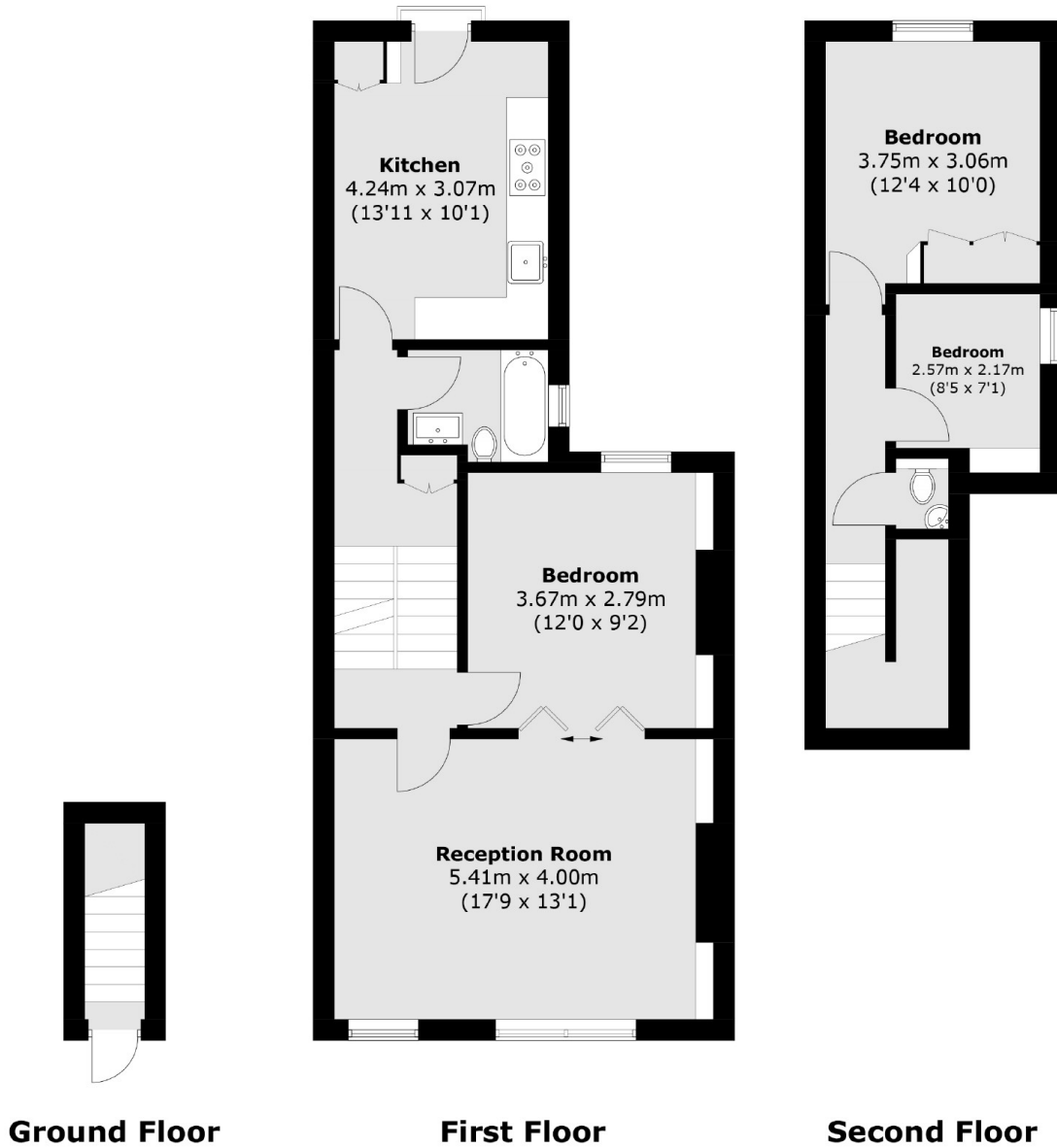
Buckleigh Road is perfectly placed within easy reach of the open spaces of Streatham Common and the Rookery. Streatham and Streatham Common Mainline stations provide direct links into both The City and the West End with Streatham High road providing an eclectic mix of independent and High Street shops, bars and restaurants.

Features

- Three bedrooms
- Top Floor Flat
- Arranged over two floors
- Kitchen/Breakfast room
- Large front reception
- Private South facing garden



Buckleigh Road,
London, SW16



Total area (approx.): 88.6 sq. m (953.7 sq. ft)