



Abercairn Road, SW16
£575,000

Dexters



Abercairn Road, SW16

Located close to Streatham Common Station, this three bedroom family home has a bright reception room, fitted with shutters as well as a large open-plan, kitchen/diner. The large garden is ideal for summer evenings and the side access is perfect for maintenance.

Upstairs there are three bedrooms, with one that can be used as a study or nursery. There is also a family bathroom located on this floor. Further space can be added as there is scope to extend into the garden or convert the loft into a further bedroom.

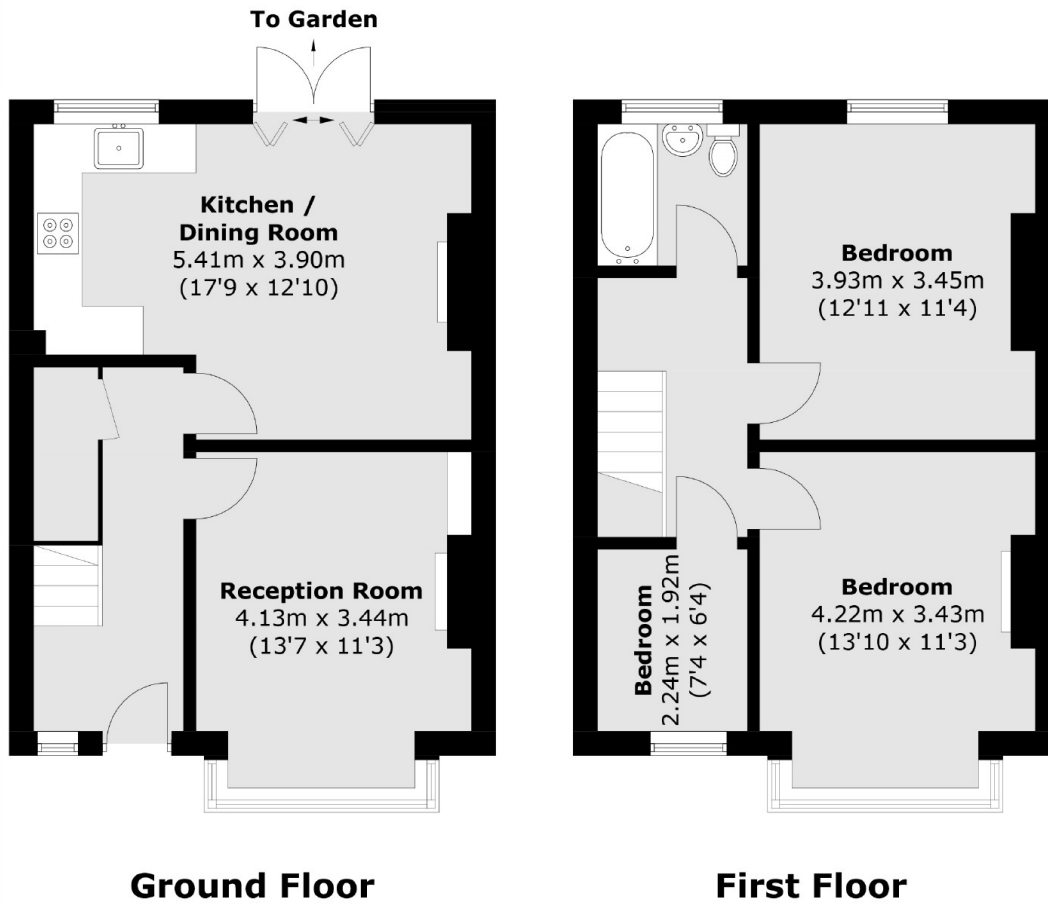
The house is positioned towards the more desired top end of Streatham Vale, close to transport links from Streatham Common Station. It is also convenient for Streatham Common and Streatham High Road which offer numerous shopping amenities.

Features

- Three Bedrooms
- Freehold House
- Close to Station
- Kitchen Diner
- Semi-detached
- Potential to Extend



Abercairn Road,
London, SW16



Total area (approx.): 84.6 sq. m (910.7 sq. ft)