

## Knights Hill, SE27

£775,000

\*\* 50% of houses now sold. A private gated mews development of EPC rated A homes with three/four bedrooms and two bathrooms as well as a private garden, roof terrace and 'pod room' perfect for home working, as a movie room or occasional guest space.

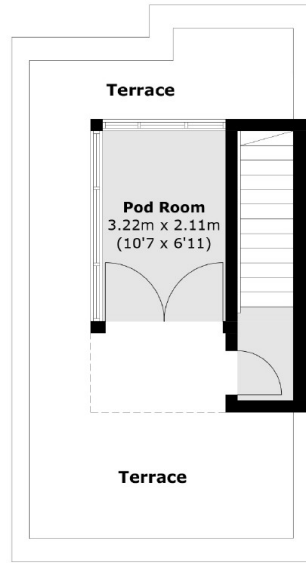
The properties are extremely energy efficient receiving an estimated EPC rating of 'A' - There are air source heat pumps, photo voltaic solar panels double and triple-glazed windows (velfac composite system) as well as an efficient pressurised hot water system all allowing for low energy bills for the buyer. With high energy efficiency and low bills, buyers can enjoy a comfortable home with low outgoings! Further benefits include 10-year build guarantees as well as brand-new appliances throughout, this property is ready for quick occupation.

Knights Hill is a secluded and very private Mews development set back from the road behind secure electric gates. It is a short walk from West Norwood Station with connections into London Victoria & London Bridge.

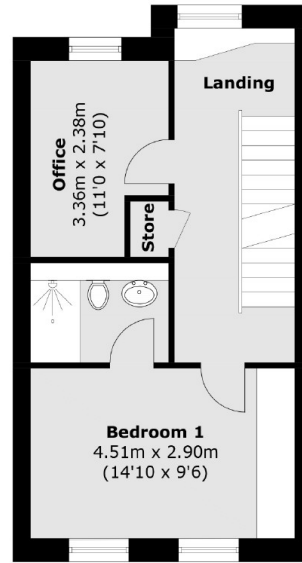
### Features

- \*\* 50% Now Sold
- \*\* Stamp Duty Paid
- Three/Four Bedrooms
- Private Mews Development
- 'Pod' Room - Study/Studio
- Estimated EPC Rating 'A'
- Air Source Heat Pump
- Solar Panel System

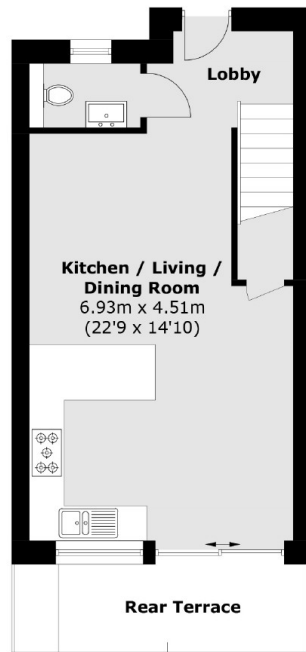
# Knights Hill, London, SE27



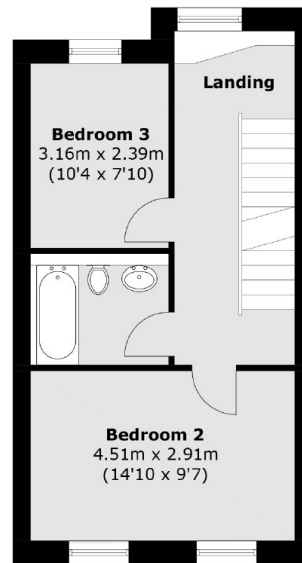
**Third Floor**



**Second Floor**



**Ground Floor**



**First Floor**

Total area (approx.): 121.2 sq. m (1,305 sq. ft)  
Terrace area : 28 sq. m (301.4 sq. ft)