



Wellfield Road, SW16
£850,000

Dexters



Wellfield Road, SW16

Located on a charming residential street is this three bedroom, end of terrace, freehold house. Downstairs is a large double reception which houses a wood burner and built in book shelves. The high ceilings throughout this house make the space feel grand and the tall windows flood the house with natural light.

To the rear is the large kitchen/diner leading onto the fully landscaped private garden. The three bedrooms on the top floor are all large double bedrooms and there is a stylish, four-piece, modern bathroom which services these rooms. There is also further potential to extend into the loft and create the side return, if needed for any future purchaser.

Wellfield Road is a popular residential road, considered by many as the heart of Streatham and is just moments from the shops, bars and restaurants of Streatham High Road. Wellfield Road is in the catchment of good schools and is connected by both Streatham and Streatham Hill Station offering links to London Victoria and London Bridge as well as St Pancras.

Features

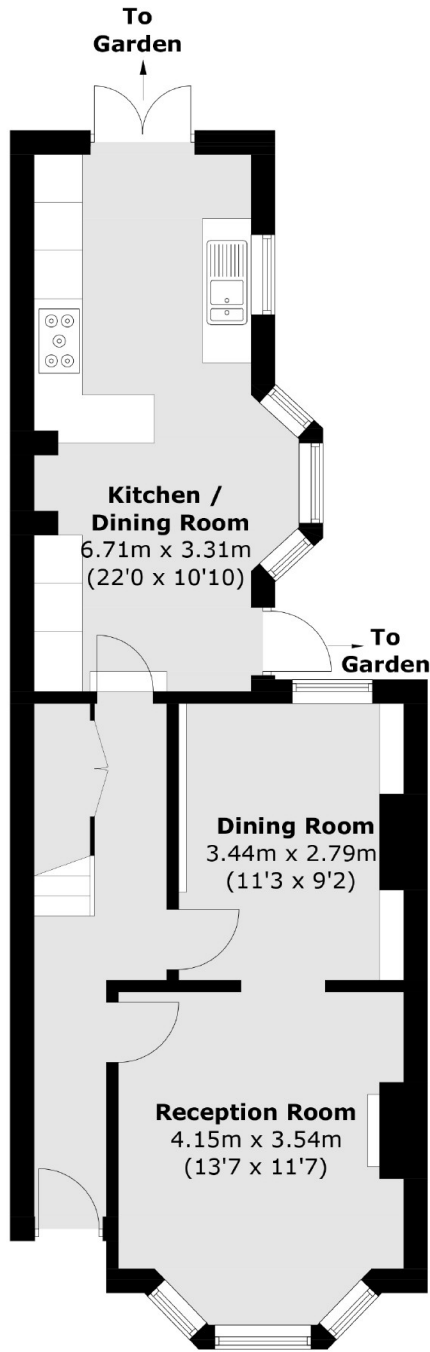
- Three Double Bedrooms
- Freehold House
- Excellent Condition
- Double Reception
- Large Kitchen/Diner
- Potential to Extend



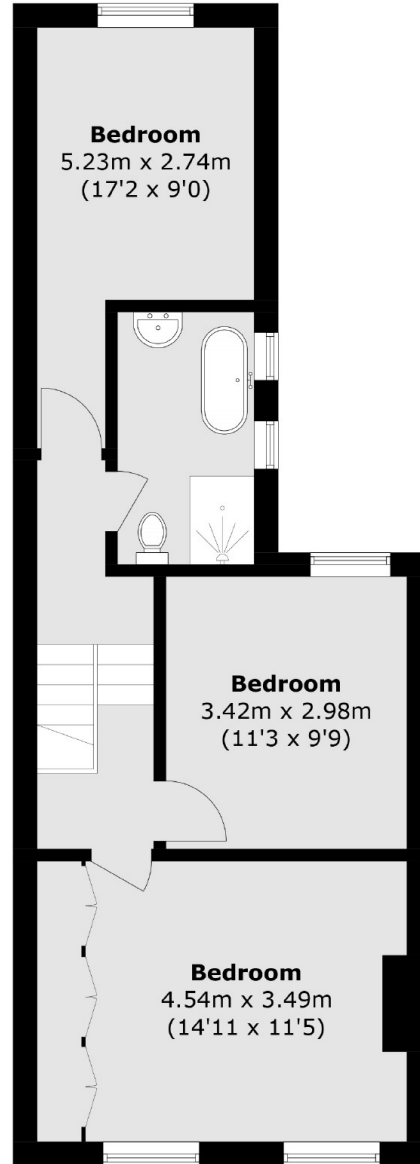




Wellfield Road,
London, SW16



Ground Floor



First Floor

Total area (approx.): 104.0 sq. m (1,119.7 sq. ft)