



## Streatham High Road, SW16

£380,000

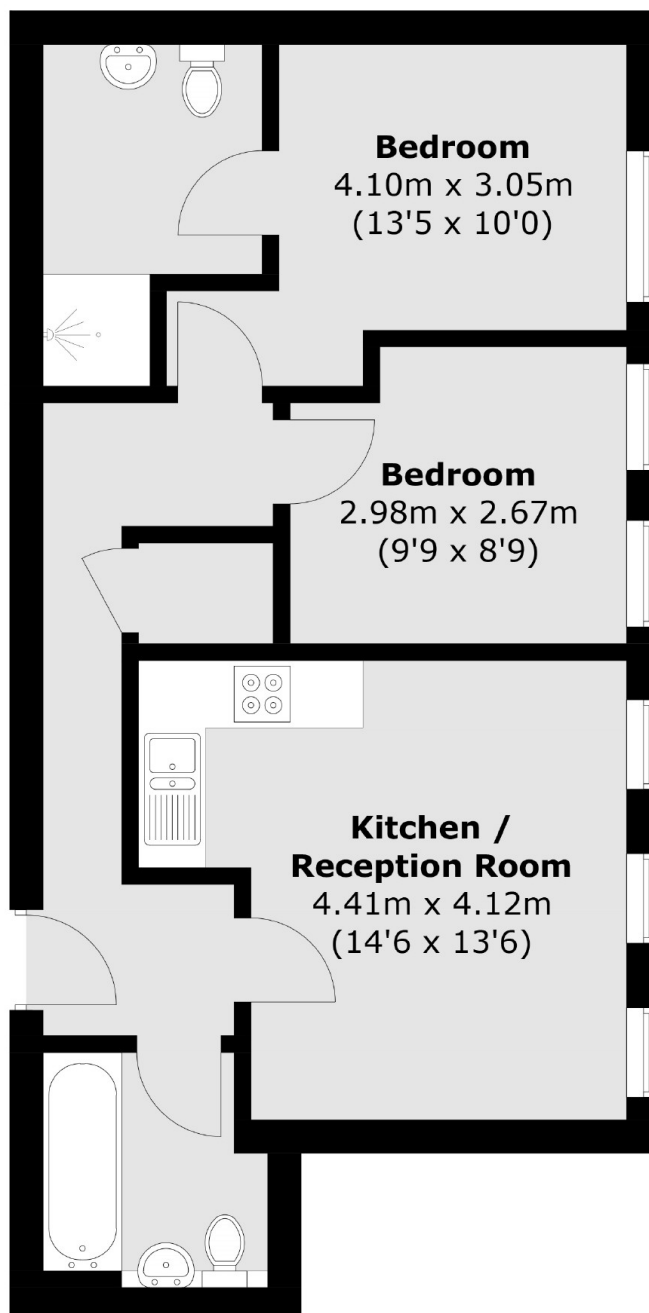
With plenty of light throughout this two double bedroom flat has a well configured, open-plan, living accommodation. There are two bathrooms with the property, one being en-suite as well as a separate laundry cupboard. This property is conveniently located for the amenities of Streatham Hill.

Norwich House is perfectly placed for Streatham town centre and Streatham Hill mainline station, providing onward journeys to London Victoria via Clapham Junction. Streatham Hill's local shops, bars and restaurants are all on your doorstep.

### Features

- Two Double Bedrooms
- Two Bathrooms
- Open-Plan
- Immaculate condition
- Conveniently Located
- Long Lease

# Streatham High Road, London, SW16



Total area (approx.): 53.0 sq. m (570.5 sq. ft)