



Covington Way, SW16
£1,350,000

Dexters



Covington Way, SW16

Arranged over three floors is this five bedroom, three bathroom family home with uninterrupted views. When entering this lovely home you are greeted with a grand entrance leading through to all of the living spaces. There are two reception rooms as well as a modern well equipped kitchen and a downstairs w/c. You can also enter the garage via the house which is ideal to get to storage easily. The kitchen leads onto the incredible landscaped garden, perfect for those summer evenings with family and friends.

Upstairs you have five bedrooms configured over two floors. The first floor has a large primary bedroom with modern en-suite and views across the park; there are a two further bedrooms on this floor with one currently being used as a study. The luxurious main bathroom services both these rooms. The current owners have converted the top floor to create two further bedrooms and shower room with one room currently being used as a snug with far reaching views from the Juliette balcony.

Covington Way is a quiet street surrounding Norwood Grove and the Rookery Gardens. This leafy part of Streatham has plenty of green open spaces to enjoy. You can access both Norbury and Streatham Stations which have access into London Victoria. Streatham High Road offers a great mix of pubs, shops and restaurants.

Features

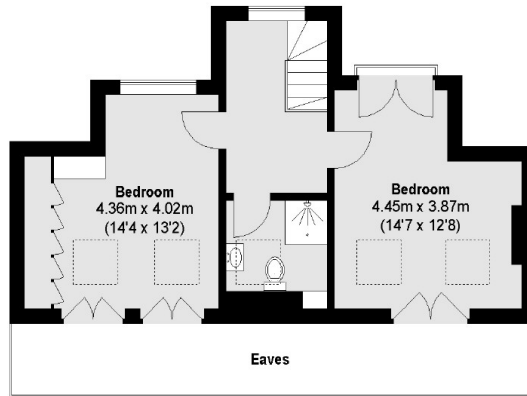
- Five Bedroom
- Three Bathrooms
- Garage
- Detached
- Landscaped Garden
- Immaculate Condition



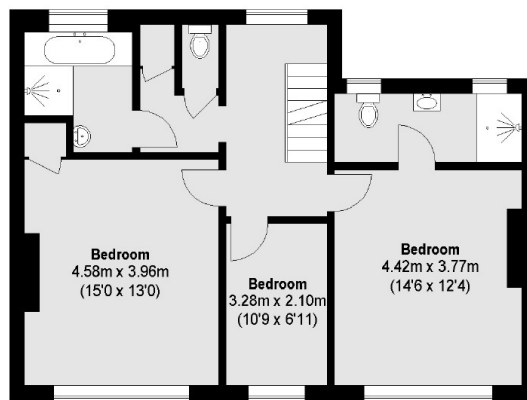




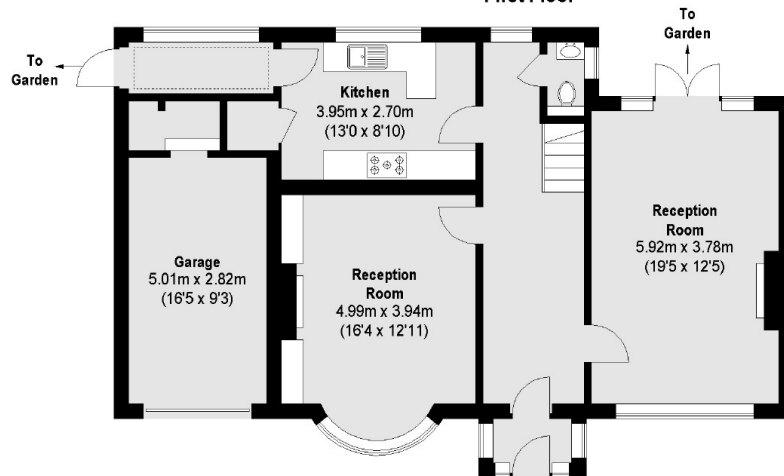
Covington Way, London, SW16



Second Floor



First Floor



Ground Floor

Total area (approx.): 208.51 sq. m (2244 Sq. ft)
(Excluding Eaves)