



Leigham Court Road, SW16 £350,000

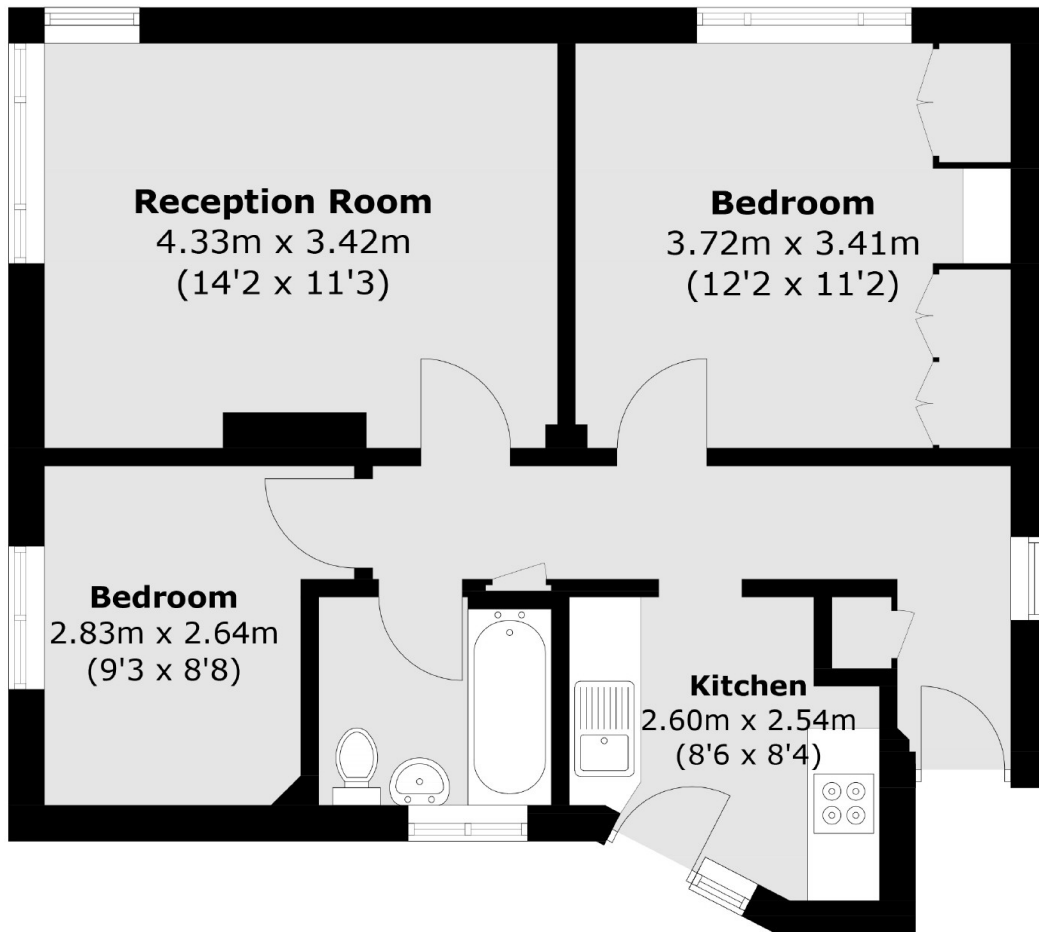
This lovely two bedroom flat has the feeling of seclusion overlooking the mature communal grounds. This home has a separate kitchen and modern bathroom as well as being located in a private gated development with communal grounds and residents parking permit.

Benhurst Court is located right next to Streatham Common which houses The Rookery. This development can be easily accessed via regular bus routes and Streatham and Streatham Hill are equidistant providing links to London Victoria and London Bridge.

Features

- Two Bedrooms
- Great Condition
- Quiet location
- Gated Development
- Separate Kitchen
- Communal Grounds

Leigham Court Road,
London, SW16



Total area (approx.): 52.8 sq. m (568.3 sq. ft)

Dexters

Streatham
105 Streatham Hill
London
SW2 4UG
Sales
020 8674 7400

Energy Rating: E. We aim to make our particulars both accurate and reliable. However they are not guaranteed; nor do they form part of an offer or contract. If you require clarification on any points then please contact us, especially if you're traveling some distance to view. Please note that appliances and heating systems have not been tested and therefore no warranties can be given as to their good working order.

 **RICS** | Regulated
Estate Agent
and Letting Agent

dexters.co.uk