



**Hillside Road, SW2**

**£2,250,000**

**Dexters**



## Hillside Road, SW2

An incredible seven double bedroom detached family home of over 4,100 sqft. Full of period features, including a stained glass conservatory on the first floor mezzanine, this detached house is unique. With grand proportions throughout and spread over three floors this property has plenty of space to be a forever family home.

On the ground floor there are three reception rooms, one currently being used as a formal dining room, a large bespoke kitchen diner, an attached pantry/utility room as well as a playroom/gym. These are all accessed from the impressive hall along with the downstairs w/c. Seven double bedrooms are spread over the upper two floors. The first floors primary bedroom has a front facing bay window with a connecting door to a second bedroom currently being used as a study. There are two further double bedrooms, a large family bathroom and a separate shower room. The top floor has three further double bedrooms and a second large family bathroom. There is also a jack and jill bathroom being shared by two of these rooms.

Hillside Road forms part of the sought after area housing Lanercost and Palace Road. Streatham Hill and Tulse Hill stations offer links into London Bridge, Kings Cross and Victoria. The green open spaces of Hillside and Brockwell parks are also nearby, as are excellent Dulwich schools.

### Features

- Seven double bedrooms
- Detached house
- Period features
- Large playroom/gym
- Off street parking with gate
- Large garden





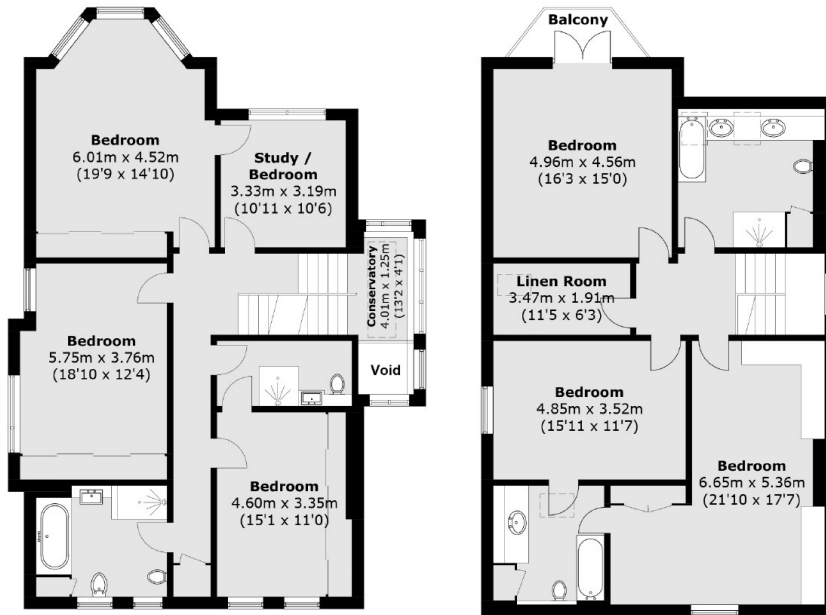








# Hillside Road, London, SW2



Total area (approx.): 384.0 sq. m (4,133.3 sq. ft)  
(Including Cellar)

Balcony area (approx.): 3.1 sq. m (33.4 sq. ft)