



Fernwood Avenue, SW16 £499,000

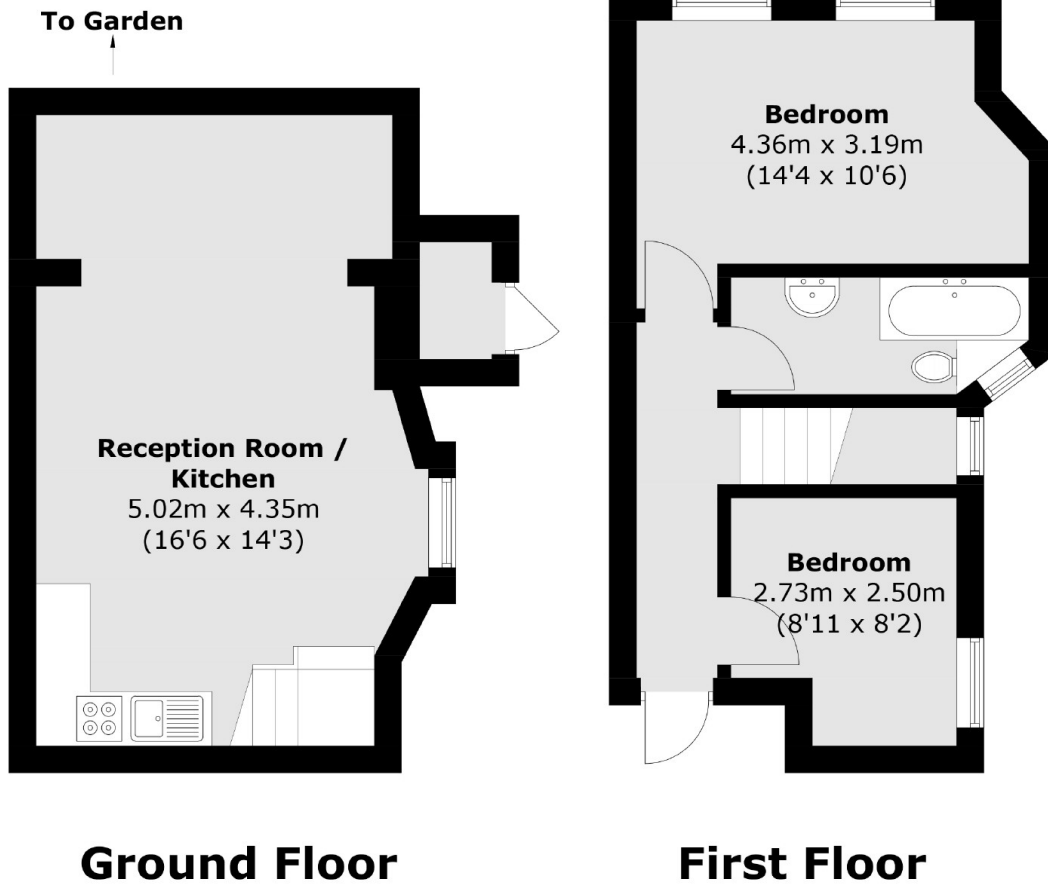
Spread over two floors, this two bedroom garden flat is beautifully presented throughout. The bright ground floor of this property is open plan with direct access onto the large private garden and has the added bonus of side access. Upstairs there are two double bedrooms as well as a large bathroom.

Fernwood Avenue is a quiet one way street conveniently located within easy reach of Streatham Hill and Streatham mainline stations. Streatham High Road offers numerous shopping amenities with Tooting Bec Common on your door step.

Features

- Large Garden
- Two Bedrooms
- Stylish Condition
- Spread over Two Floors
- Bright Flat
- Side Access

Fernwood Avenue,
London, SW16



Total area (approx.): 57.4 sq. m (617.8 sq. ft)
Store : 1.2 sq. m (12.9 sq. ft)