



## Hardel Rise, SW2

£750,000

\*\* Last Home Remaining! A three-bedroom, two-bathroom home with two reception rooms. The flexible layout means you could also have a fourth bedroom on the ground floor with a lovely kitchen/reception room to the rear leading to the West facing private garden.

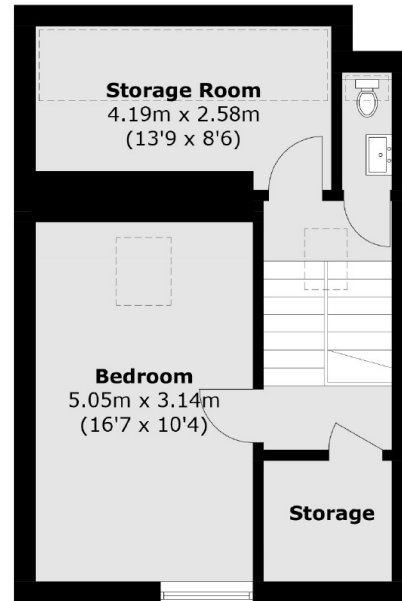
There is a large storage space on the top floor that is perfect for a home office/dressing room or just as useful additional storage. Further benefits include 10-year build guarantees as well as brand-new appliances throughout, this property is ready for quick occupation.

Tulse Hill is an incredibly convenient location accessible for the many shops, bars restaurants, and amenities of Dulwich, Streatham, Clapham & Brixton. Brockwell Park and it's 125 acres of green open spaces are on the doorstep along with it's famous Lido

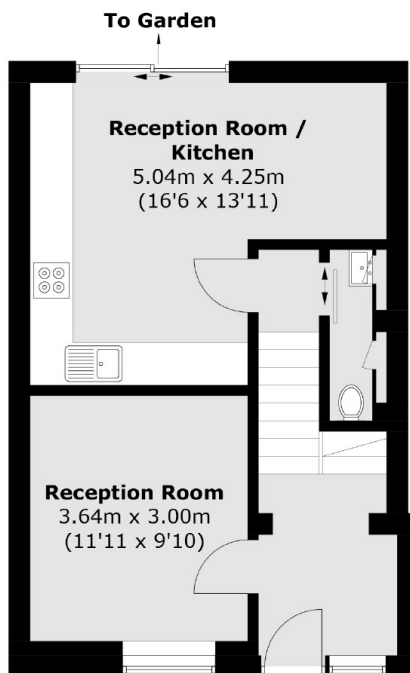
### Features

- Two/Three Double Bedrooms
- New Build Freehold Homes
- Front & Rear Gardens
- High Specification Finishes
- Close To Transport
- Brockwell Park - Very Nearby

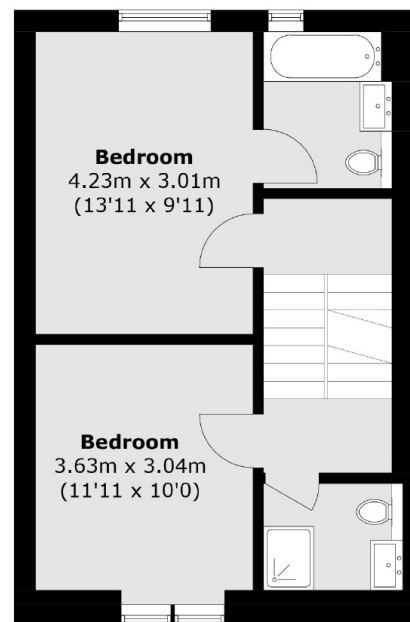
# Hardel Rise, , SW2



**Second Floor**



**Ground Floor**



**First Floor**

Total area (approx.): 128.5 sq. m (1,383.2 sq. ft)