



Streatham Road, CR4

£325,000

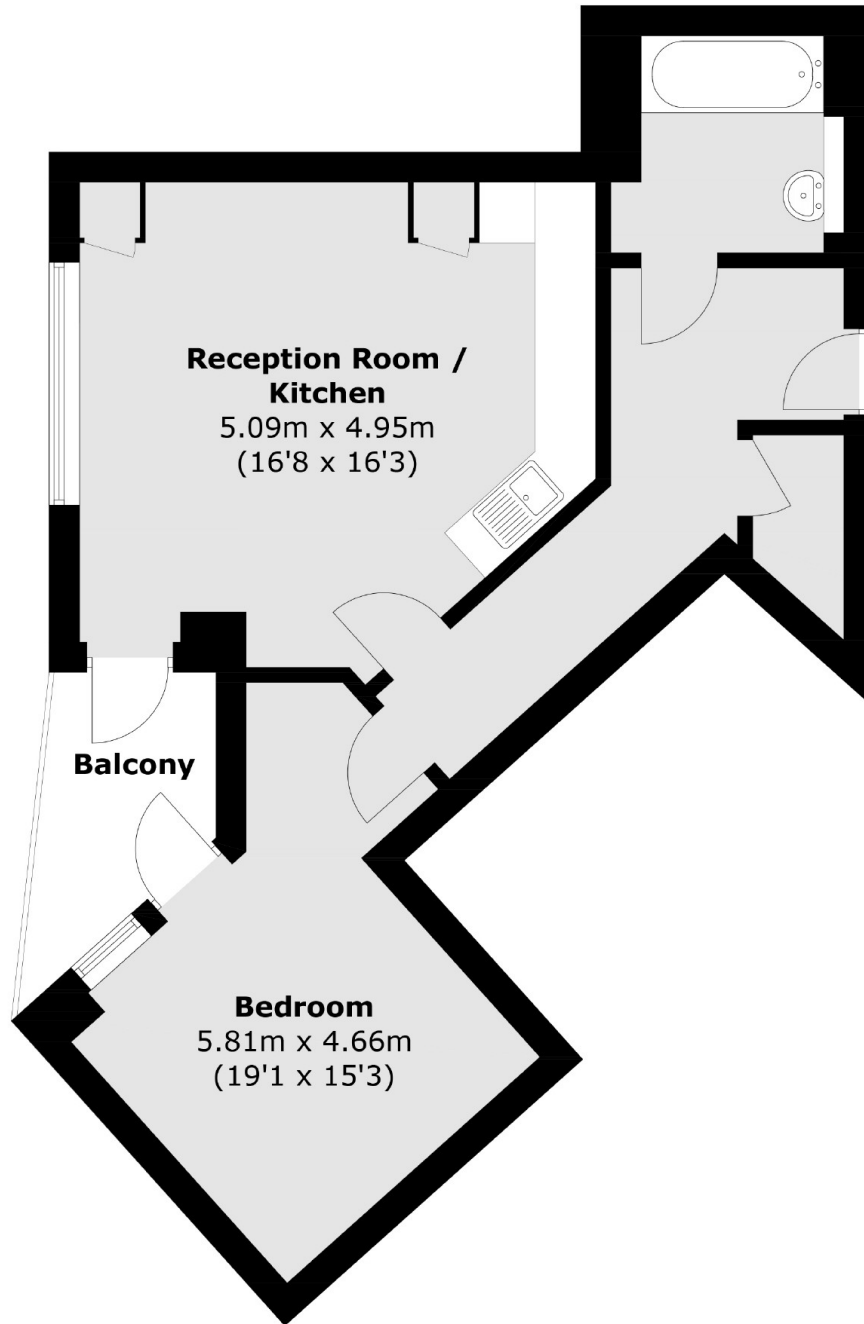
At just under 570sqft this modern one double bedroom flat is in great condition throughout. This home has a spacious open-plan kitchen/living room, large bedroom and balcony that can be accessed via both rooms.

Imperial Court is located within a mile of both Streatham Common and Tooting stations, with bus routes on your doorstep. The development offers great options whether you work locally or in town.

Features

- One Double Bedroom
- Modern Block
- Communal Grounds
- Balcony
- Secure cycle storage
- Bright Flat

Streatham Road,
Mitcham, CR4



Second Floor

Total area (approx.): 52.9 sq. m (569.4 sq. ft)
Balcony: 4.3 sq. m (46.2 sq. ft)

Dexters

Streatham
105 Streatham Hill
London
SW2 4UG
Sales
020 8674 7400

Energy Rating: B. We aim to make our particulars both accurate and reliable. However they are not guaranteed; nor do they form part of an offer or contract. If you require clarification on any points then please contact us, especially if you're traveling some distance to view. Please note that appliances and heating systems have not been tested and therefore no warranties can be given as to their good working order.

 **RICS** | Regulated
Estate Agent
and Letting Agent

dexters.co.uk