



## Besley Street, SW16

£650,000

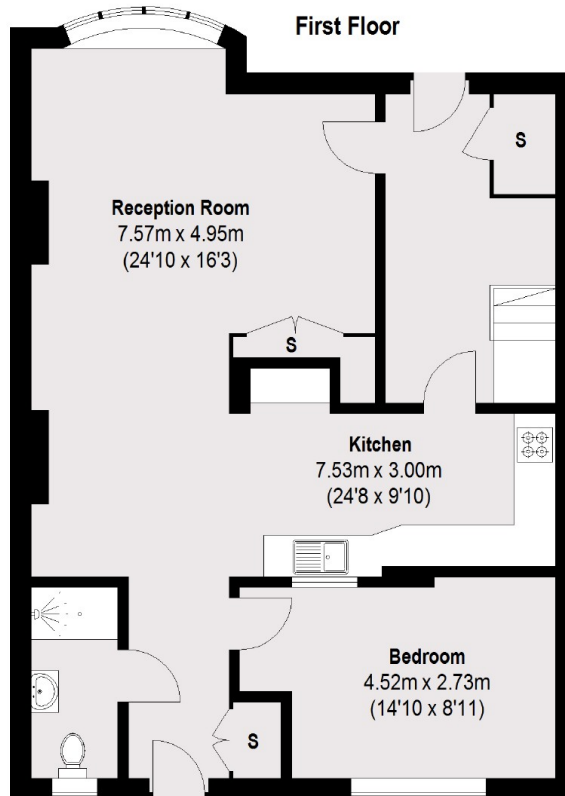
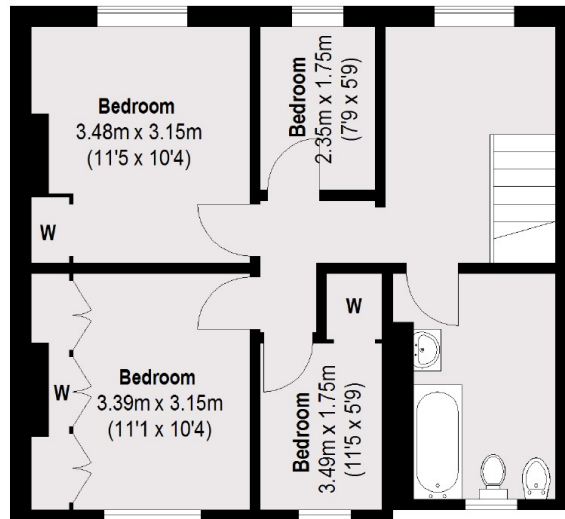
Sitting on a wide plot with huge potential for refurbishment, this fully extended five bedroom family house offers unique and endless possibilities for an incoming purchaser.

Besley Street is a quiet residential Road perfectly positioned for Streatham Common mainline station, providing frequent links to Victoria and London Bridge. Both Streatham and Tooting Common are within walking distance.

### Features

- Extended to side and rear
- Large Open Rooms
- Four/Five Bedrooms
- Two Bathrooms
- Sunny Garden
- Popular Location

# Besley Street, London, SW16



## Ground Floor

Total area (approx.): 129.1 sq. m (1390 Sq. ft)