

Dunbar Crescent, Highcliffe, Christchurch, BH23 5RY

Offers Over £600,000 FREEHOLD



Dunbar Crescent, Highcliffe, Christchurch, BH23 5RY - Offers Over £600,000

DESCRIPTION

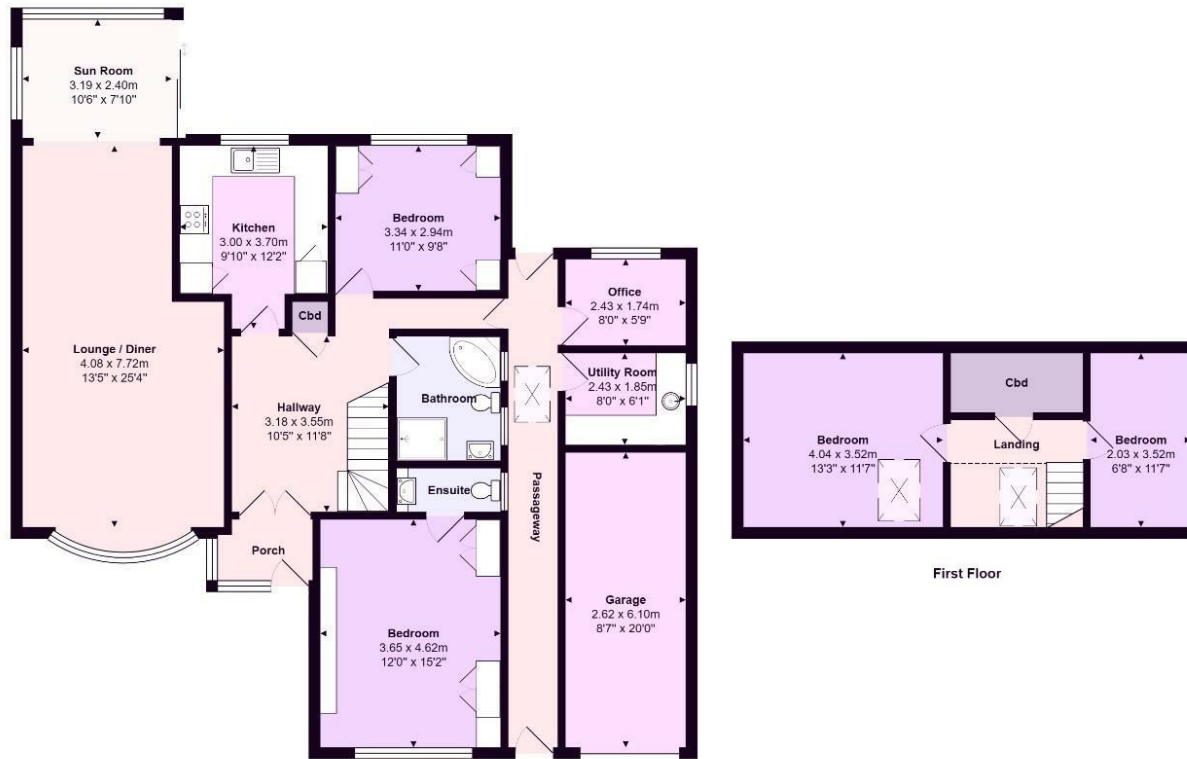
*****NO CHAIN *****This well proportioned detached four bedroomed chalet bungalow, offers light and well-appointed living accommodation, situated in a most sought-after residential area of Highcliffe, Close to all amenities and approximately one mile from the village centre. Highcliffe village Centre itself, has a comprehensive range of shopping facilities and is only a short walking distance to the cliff top, with its stunning views over the Solent and Isle of Wight to the east, along with magnificent views towards Christchurch Harbour and Hengistbury Head to the west.

The property itself has been well maintained throughout and has been extended over recent years, forming two more first floor bedrooms and large storeroom. The main ground floor accommodation boasts a large reception hall, with stairs leading to the first-floor bedrooms, large through sitting/dining room, a well fitted integrated kitchen/breakfast room, along with a large family bathroom with corner bath and a stand-alone shower cubicle. There are two double bedrooms on the ground floor level, the master benefiting from an en-suite shower room. The versatile accommodation also offers a self-contained home office facility, with independent access from the front of the bungalow, with internal access to the main dwelling if required. A useful Utility room is also sited in this part of the bungalow, to the rear of the home office and the attached garage.

The property offers excellent off-road parking, with a sweeping in and out Carriage driveway and block paving to the front of the garage for further parking if required. The rear garden has been well set out, with close panelled fencing on all sides, and an extensive patio which has been set on two sides of the garden, with an attractive Pergola, all of which leads onto well-tended lawns with well stocked borders. An early inspection is highly recommended for this impressive property, through the Vendors sole agent Hunters.







Ground Floor

First Floor



Total Area: 170.9 m² ... 1840 ft²
 All measurements are approximate and for display purposes only



Viewings

Please contact highcliffesales@hunters.com, if you wish to arrange a viewing appointment for this property or require further information.

Valuations

For a valuation of your property, please email the team with your property details, contact information and the times you are available.

ENERGY PERFORMANCE CERTIFICATE

The energy efficiency rating is a measure of the overall efficacy of a home. The higher the rating the more energy efficient the home is and the lower the fuel bills will be.

Energy Efficiency Rating		Current	Potential
Very energy efficient - lower running costs			
(92 plus) A			
(81-91) B			
(69-80) C			
(55-68) D		58	74
(39-54) E			
(21-38) F			
(1-20) G			
Not energy efficient - higher running costs			
England & Wales		EU Directive 2002/91/EC	

These particulars are intended to give a fair and reliable description of the property but no responsibility for any inaccuracy or error can be accepted and do not constitute an offer or contract. We have not tested any services or appliances (including central heating if fitted) referred to in these particulars and the purchasers are advised to satisfy themselves as to the working order and condition. If a property is unoccupied at any time there may be reconnection charges for any switched off/disconnected or drained services or appliances - All measurements are approximate.

THINKING OF SELLING? If you are thinking of selling your home or just curious to discover the value of your property, Hunters would be pleased to provide free, no obligation sales and marketing advice. Even if your home is outside the area covered by our local offices we can arrange a Market Appraisal through our national network of Hunters estate agents.



302 Highcliffe, Dorset, BH23 5ET
 Tel: 01425 272163 Email: highcliffesales@hunters.com <https://www.hunters.com>