



**Academy Place  
Isleworth**

£385,000

**ChaseBuchanan**

## Key Features

- Viewings accompanied by Chase Buchanan
- Modern gated development
- Two double bedrooms
- Two bathrooms
- Lift serviced
- Allocated parking
- Chain free
- Close to Osterley and Isleworth stations

## Description

A beautifully presented two double bedroom, two bathroom property set in a modern gated development with easy access to all the local amenities.

Features include a spacious open-plan reception room with a Juliet balcony and contemporary kitchen, two double bedrooms, wooden flooring throughout, and a modern bathroom with an additional en-suite shower room. Additional benefits include a 108-year lease, an allocated parking space, and a lift to all floors.

It has easy access to both Osterley tube station and Isleworth mainline station.





# Academy Place TW7

Approx. Gross Internal Floor Area  
63.8 Sq M - 687 Sq Ft

ChaseBuchanan

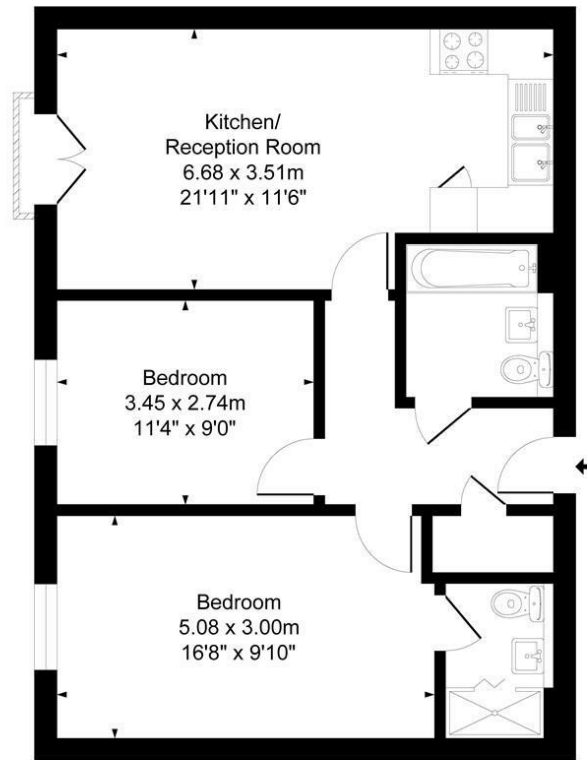


Illustration for identification purposes only, measurements are approximate, not to scale.  
Produced By Esjay Property Marketing

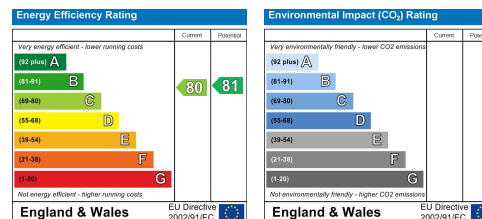
For more information or to book a viewing, please contact:

**020 8758 1755**

isleworth@chasebuchanan.london

480 London Road, TW7 4DE

Care has been taken in the preparation of these particulars, however, their accuracy is not guaranteed and they do not form part of any contract. Measurements stated must be considered maximum.



**ChaseBuchanan**