



**Worton Road  
Old Isleworth**

£425,000

**ChaseBuchanan**



## Key Features

- Viewings accompanied by Chase Buchanan
- Penthouse apartment
- Two double bedrooms
- Two bathrooms
- Large private wrap around roof terrace
- Direct views of Redlees Park
- Close to Twickenham/St Margarets/Richmond
- Chain free



## Description

A stunning top-floor penthouse apartment, located in a modern block with direct views over Redlees Park.

The accommodation comprises a spacious open-plan reception/kitchen/dining room with doors onto a larger than average roof terrace, a master bedroom with doors out to a private roof terrace and an en-suite shower room, a second double bedroom and a family bathroom. Further benefits include a long lease, ample storage, lift serviced, a communal bike shed and an allocated parking space.

Hippisley Court is well placed for the amenities of Isleworth and is within close proximity to Twickenham, St Margarets and Richmond.







## Worton Road TW7

Approx. Gross Internal Floor Area  
83.5 Sq M - 900 Sq Ft

ChaseBuchanan

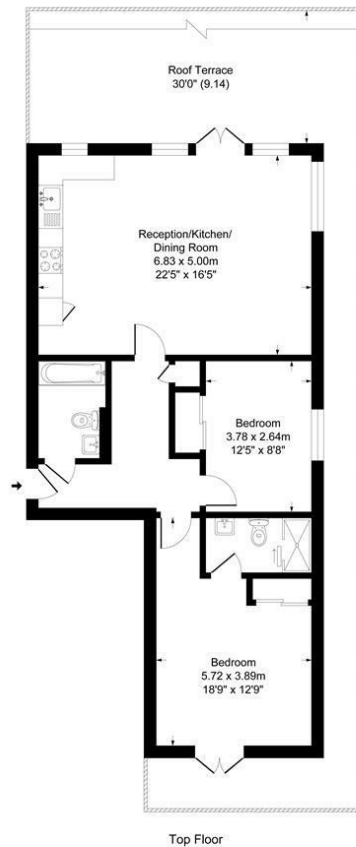
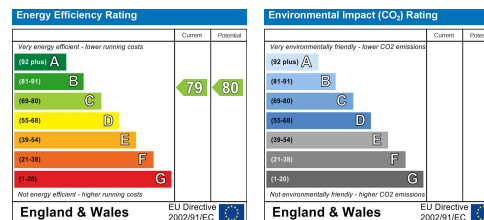


Illustration for identification purposes only, measurements are approximate, not to scale.

Care has been taken in the preparation of these particulars, however, their accuracy is not guaranteed and they do not form part of any contract. Measurements stated must be considered maximum.



For more information or to book a viewing, please contact:

**020 8758 1755**

isleworth@chasebuchanan.london

480 London Road, TW7 4DE

**ChaseBuchanan**