

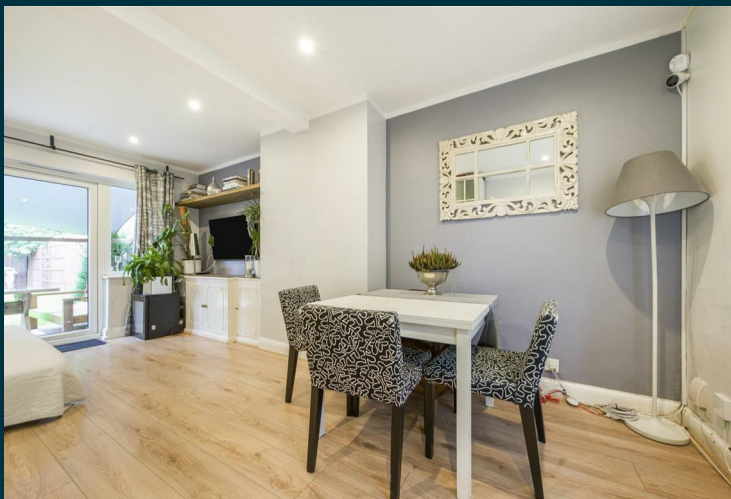


**Chase  
Buchanan**  
  
for sale  
020 8758 1755

**North Hyde Lane  
Heston**  
  
£485,000  
  
**ChaseBuchanan**

## Key Features

- Viewings accompanied by Chase Buchanan
- Semi-detached family home
- Two bedrooms
- Huge potential (STPP)
- Off street parking
- Chain free



## Description

Located on the Norwood Green borders of Heston is this lovely semi-detached family home with huge potential.

The ground floor comprises a bright and open plan living/dining room and a modern fitted kitchen, whilst the first floor has two generous sized bedrooms, a family bathroom and a separate W.C. Further benefits include a good sized rear garden, off street parking and potential to extend to the rear and into the loft (subject to planning).

North Hyde Lane is well placed for local amenities and transport links with some highly regarded schools close by.

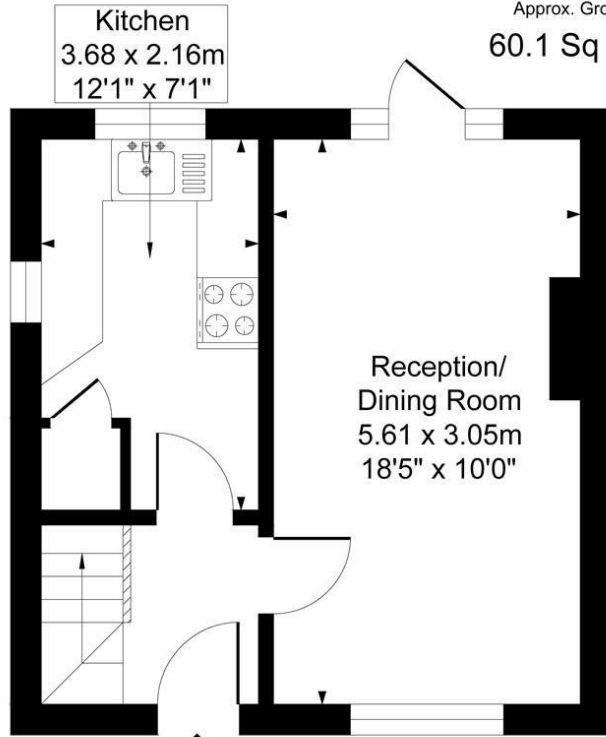




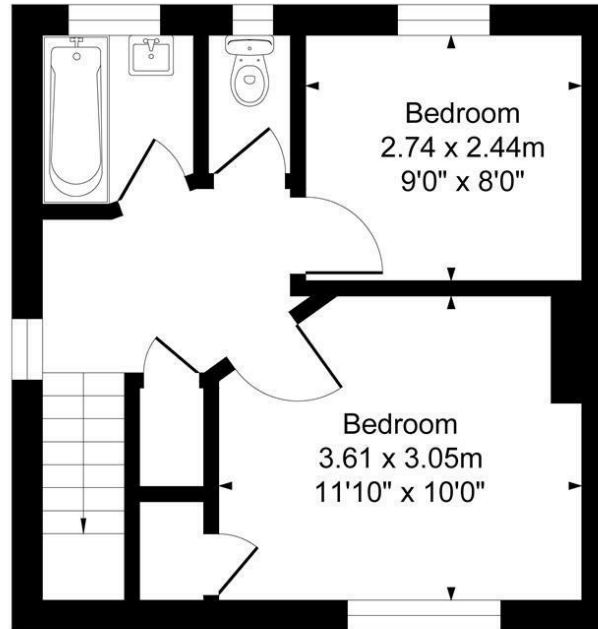
# North Hyde Lane TW5

ChaseBuchanan

Approx. Gross Internal Floor Area  
60.1 Sq M - 648 Sq Ft



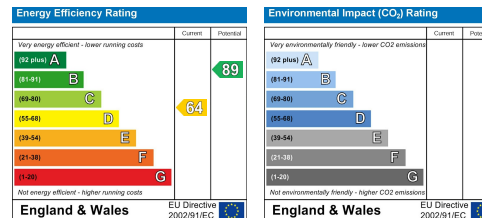
Ground Floor  
Approximate Floor Area  
323.82 sq.ft  
(30.08 sq.m)



First Floor  
Approximate Floor Area  
323.82 sq.ft  
(30.08 sq.m)

Illustration for identification purposes only, measurements are approximate, not to scale.

Care has been taken in the preparation of these particulars, however, their accuracy is not guaranteed and they do not form part of any contract. Measurements stated must be considered maximum.



For more information or to book a viewing, please contact:

**020 8758 1755**

isleworth@chasebuchanan.london

480 London Road, TW7 4DE

**ChaseBuchanan**