

**Octavia Road  
Isleworth  
TW7 6JW**

**£385,000**

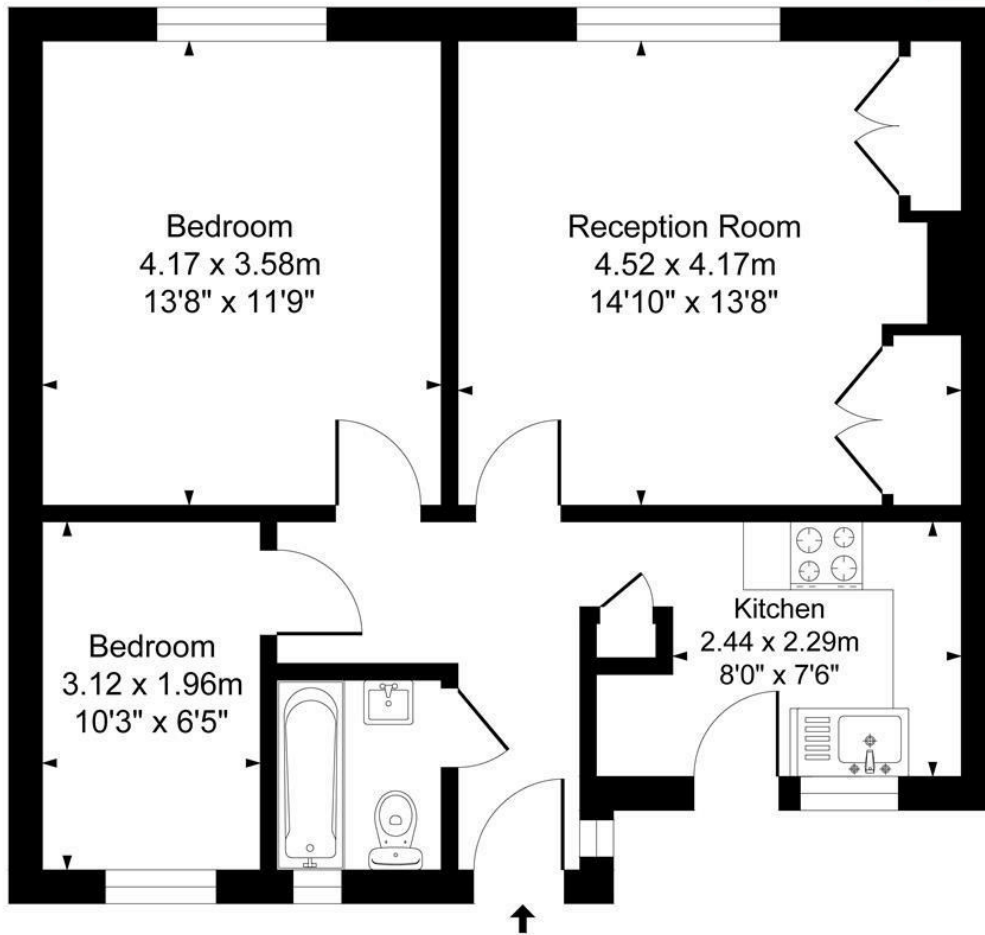
**ChaseBuchanan**



# Octavia Road TW7

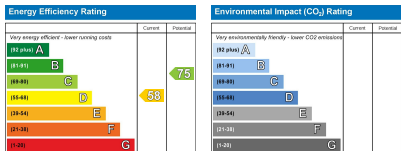
Approx. Gross Internal Floor Area  
58.5 Sq M - 630 Sq Ft

ChaseBuchanan



First Floor

Illustration for identification purposes only, measurements are approximate, not to scale.



Care has been taken in the preparation of these particulars, however, their accuracy is not guaranteed and they do not form part of any contract. Measurements stated must be considered maximum.

- Viewings Accompanied by Chase Buchanan
- Two bedrooms
- Private rear garden
- First floor masonette
- Spacious reception room
- Close to transport links

A well presented first floor maisonette, located in a quiet road walking distance from Isleworth BR station.

The accommodation comprises a bright and spacious reception room, a modern fitted kitchen with doors onto a private balcony, a modern fitted bathroom, and two bedrooms. Further benefits include a private rear garden.

Octavia Road is a quiet road within walking distance of Isleworth BR station and well located for Hounslow High Street's amenities. There are also some very highly regarded schools close by.

For more information or to book a viewing, please contact:

020 8758 1755

**ChaseBuchanan**

7 Odeon Parade, 480 London Road, Isleworth, Middlesex, TW7 4DE