



**St. Heliers Avenue
Hounslow**

£585,000

ChaseBuchanan

Key Features

- Viewings accompanied by Chase Buchanan
- Four bedrooms semi-detached family home
- Extended ground floor open plan living
- Off street parking
- Brick built studio
- Close to transport links
- Popular school catchment
- Potential for a loft room



Description

A fabulous 1930's semi-detached family home, located on this popular road close to the Whitton borders of Hounslow.

The accommodation comprises a front reception/bedroom, an extended and open plan family room/dining room, modern fitted kitchen and a guest wc on the ground floor, whilst the first floor boasts three generous sized bedrooms and a family bathroom. Further benefits include off street parking, a rear garden with a brick built studio and potential for a loft room (subject to planning).

St. Heliers Avenue is well located for transport links with some highly regarded schools close by.





Approximate Gross Internal Floor Area = 118.4 sq m / 1276 sq ft

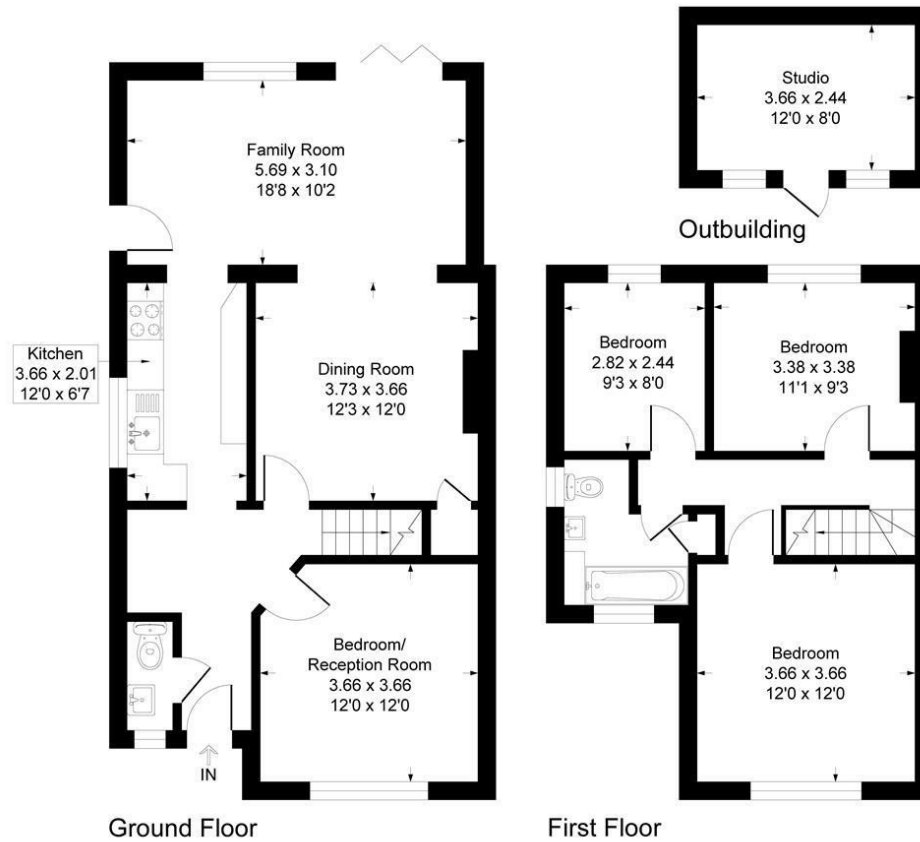
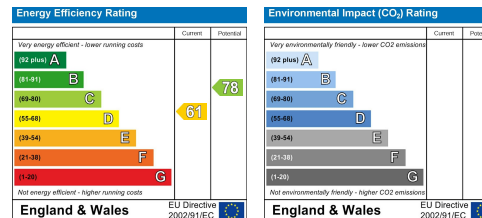


Illustration for identification purposes only, measurements are approximate, not to scale.

Care has been taken in the preparation of these particulars, however, their accuracy is not guaranteed and they do not form part of any contract. Measurements stated must be considered maximum.



For more information or to book a viewing, please contact:

020 8758 1755

isleworth@chasebuchanan.london

480 London Road, TW7 4DE

ChaseBuchanan