



**Spring Grove Road
Hounslow**

£685,000

ChaseBuchanan

Key Features

- Viewings accompanied by Chase Buchanan.
- Four bedroom semi-detached family home
- Stunning south facing garden
- Off road parking
- Potential to extend further (STPP)
- Short walk to Hounslow Tube Station and Isleworth Mainline Train Station



Description

Chase Buchanan are delighted to offer this superb four-bedroom semi-detached family home to the market. It offers generous accommodation, parking, a stunning garden with a patio, and is within walking distance of both Hounslow East Tube Station and Isleworth Mainline Train Station.

The property boasts two generous reception rooms: the front living room with its attractive fireplace and the dining room, which features double patio doors leading out to the stunning south-facing garden.

The kitchen has ample high and low storage cupboards and overlooks the rear garden. This property has the potential for a large rear extension (STPP).

Upstairs, there are three double bedrooms and one single. The principal bedroom boasts an en-suite. The family bathroom comprises a bath/shower, basin, and W.C.

The garden is truly beautiful, featuring a large lawn with mature plants and shrubs, a generous patio, side and rear access, and a gardener's toilet.

Spring Grove Road is conveniently located just a short distance from Osterley and Hounslow East Tube Stations, where the Piccadilly line offers swift transportation into London and beyond. Isleworth Mainline Train Station is also a short walk. Outstanding educational facilities are also easily accessible from this property.





Spring Grove TW3

Approx. Gross Internal Floor Area
107.8 Sq M - 1161 Sq Ft

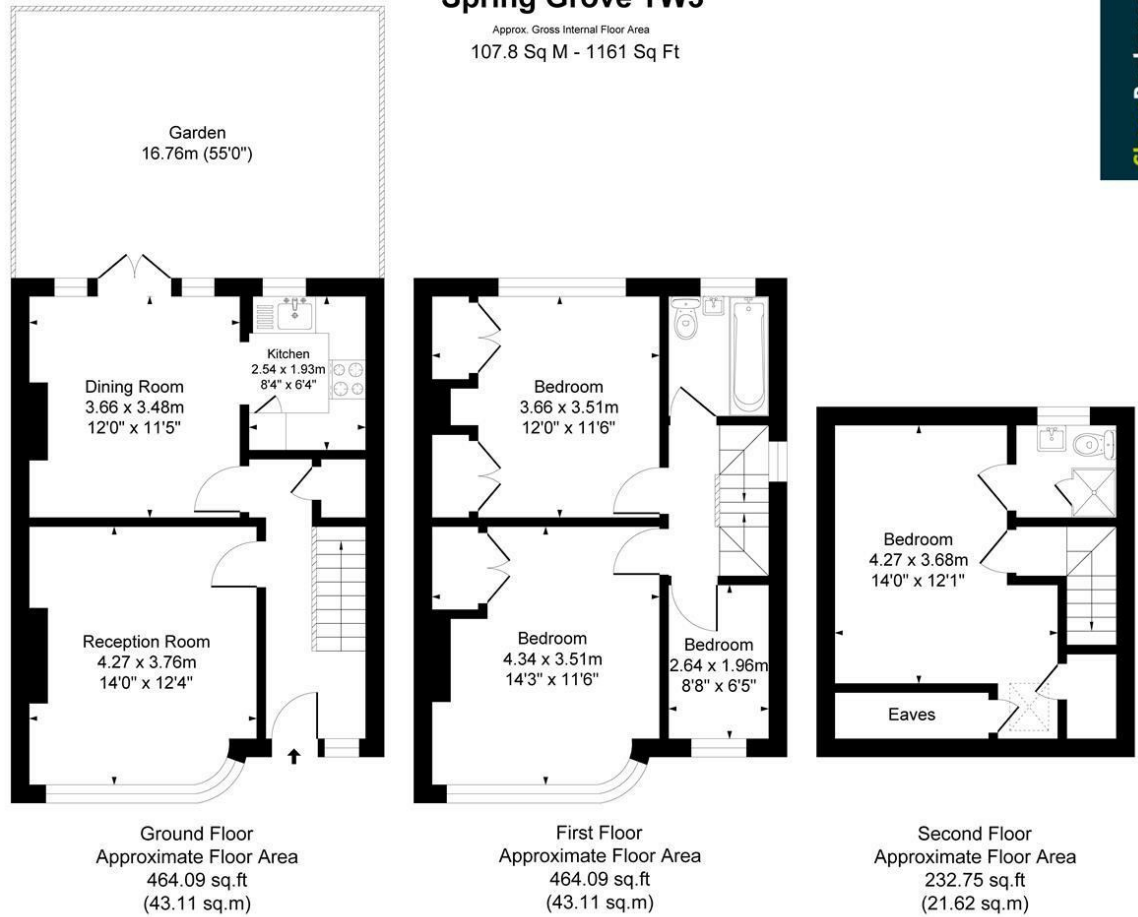
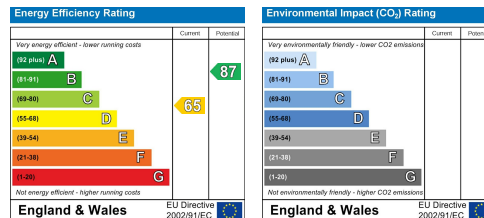


Illustration for identification purposes only, measurements are approximate, not to scale.
Produced By Esjay Property Marketing

Care has been taken in the preparation of these particulars, however, their accuracy is not guaranteed and they do not form part of any contract. Measurements stated must be considered maximum.



For more information or to book a viewing, please contact:

020 8758 1755

isleworth@chasebuchanan.london

480 London Road, TW7 4DE

ChaseBuchanan