



**Jersey Road  
Osterley**

**£1,350,000**

**ChaseBuchanan**

## Key Features

- Viewings accompanied by Chase Buchanan
- Six bedroom semi-detached period property
- Immaculately presented throughout
- Three bathrooms
- Stunning landscaped garden with summer house/gym accommodation
- Far reaching views over Osterley Park
- Ample private parking
- Short walk to Osterley tube station



## Description

Nestled on the prestigious Jersey Road in Isleworth, this stunning six bedroom semi-detached house is a true gem waiting to be discovered. Boasting two reception rooms and three bathrooms, this property offers ample space for comfortable living.

As you step inside, you'll be greeted by an immaculately presented interior that exudes elegance and charm. The property features a beautiful garden with an additional outbuilding, perfect for enjoying the outdoors or entertaining guests.

One of the standout features of this property is the parking space it offers - with room for up to four vehicles, parking will never be an issue for you or your guests. Imagine coming home to this picturesque setting every day, with far-reaching views over Osterley Park adding to the allure of this already impressive home.

Whether you're looking for a spacious family home or a property with great potential, this 6-bedroom house on Jersey Road is sure to tick all the boxes. Don't miss out on the opportunity to make this dream property your own.

Situated on Jersey Road overlooking the historical Osterley Park, this house is ideally located for all local amenities, some great schools, and Osterley tube station.





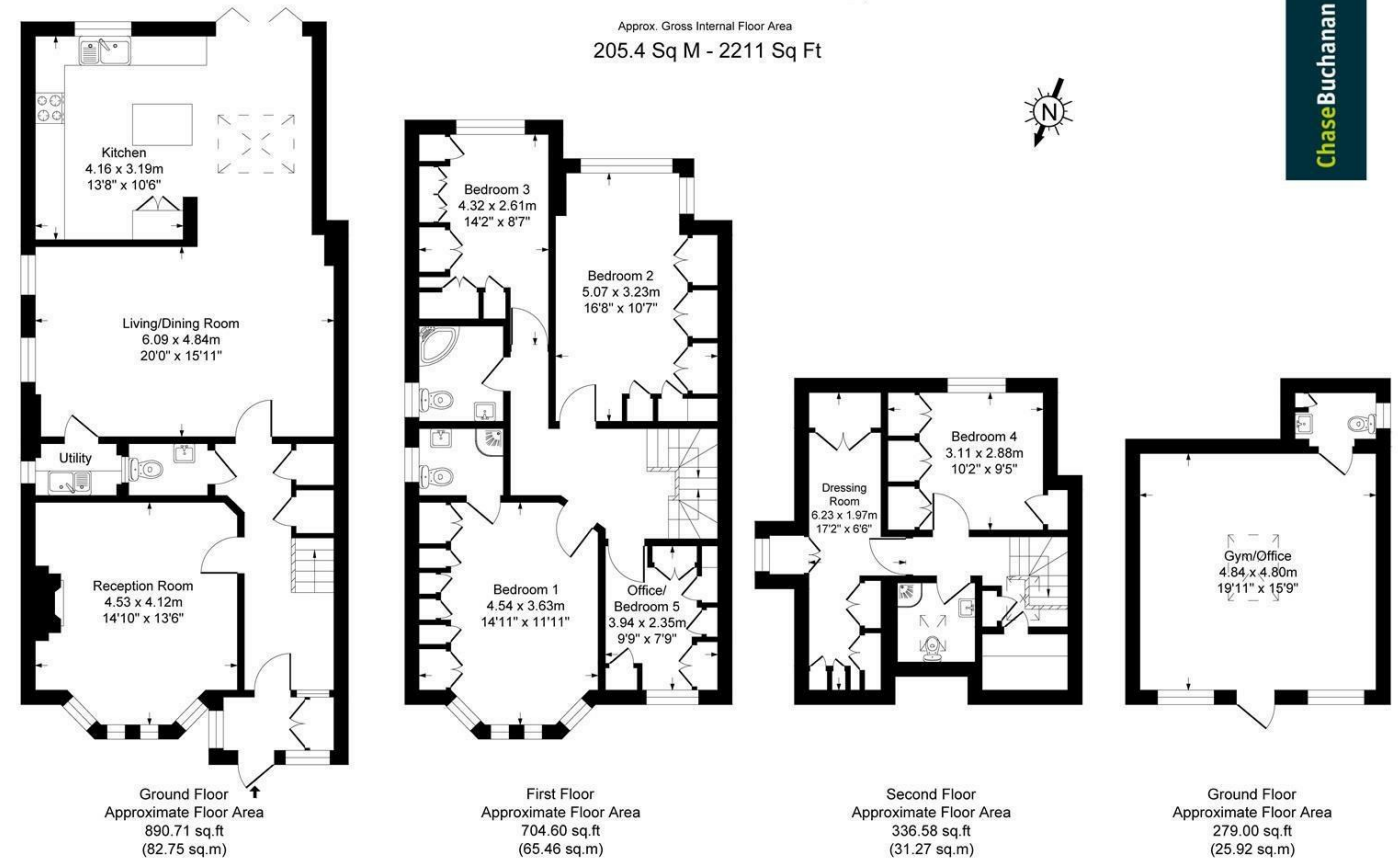


Illustration for identification purposes only, measurements are approximate, not to scale.  
Produced By Esjay Property Marketing

For more information or to book a viewing, please contact:

**020 8758 1755**

isleworth@chasebuchanan.london

480 London Road, TW7 4DE

**Chase Buchanan**

Care has been taken in the preparation of these particulars, however, their accuracy is not guaranteed and they do not form part of any contract. Measurements stated must be considered maximum.

