

Sidmouth Avenue  
Isleworth  
TW7 4FQ

£390,000

ChaseBuchanan





# Grove House TW7

Approx. Gross Internal Floor Area  
59.6 Sq M - 642 Sq Ft

ChaseBuchanan

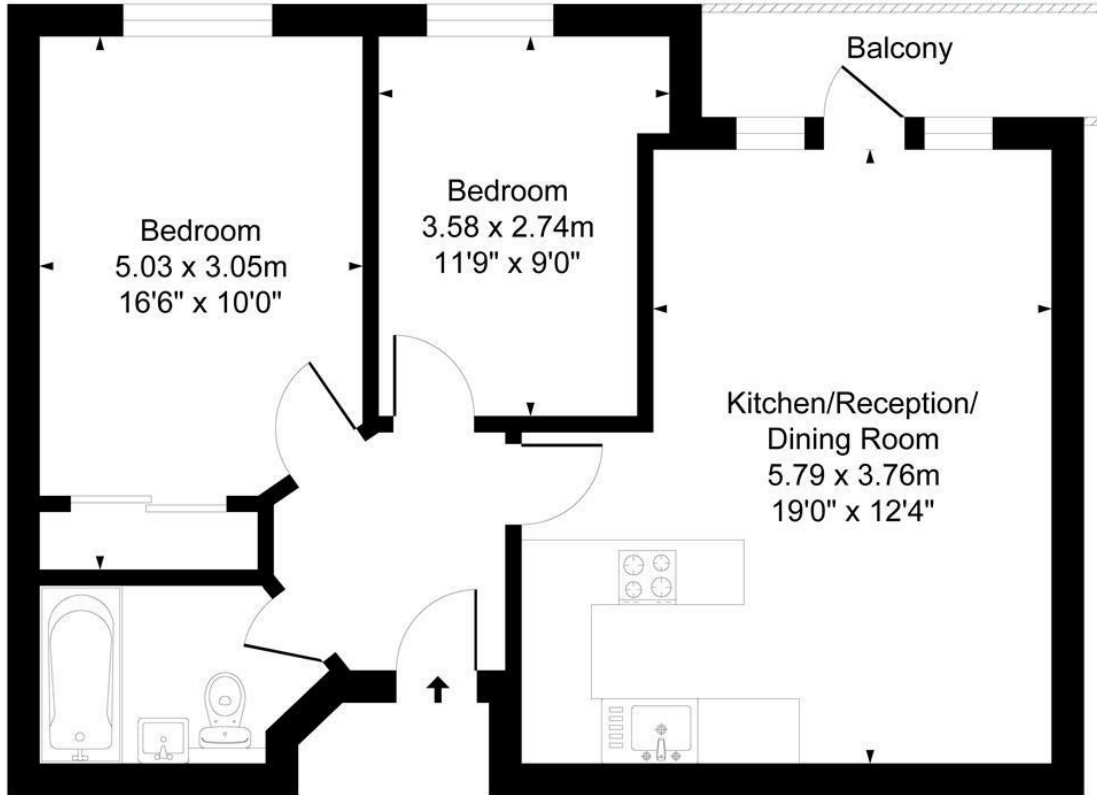
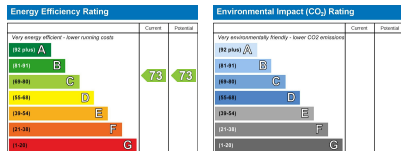


Illustration for identification purposes only, measurements are approximate, not to scale.  
Produced By Esjay Property Marketing



Care has been taken in the preparation of these particulars, however, their accuracy is not guaranteed and they do not form part of any contract. Measurements stated must be considered maximum.

- Viewings accompanied by Chase Buchanan
- Moments from Isleworth mainline station
- Secure gated parking
- Modern two bedroom apartment
- Balcony
- Lift serviced

A stylish modern apartment, located in this lift serviced block in Central Isleworth close to the station.

The accommodation comprises a bright spacious open plan lounge/diner with a modern kitchen and doors onto a private balcony, two double bedrooms and a family bathroom. Further benefits include an allocated parking space behind secure gates and 117 years lease.

Sidmouth Avenue is well placed for the cafes, restaurants, bars and amenities that Isleworth has to offer, whilst Osterley Tube Station is also within walking distance.

For more information or to book a viewing, please contact:

020 8758 1755

**ChaseBuchanan**

7 Odeon Parade, 480 London Road, Isleworth, Middlesex, TW7 4DE