



**Great West Road  
Hounslow**

£725,000

**Chase**Buchanan

## Key Features

- Viewings accompanied by Chase Buchanan
- 1930's semi-detached family home
- Four bedrooms
- Three bathrooms
- Generous accommodation
- Large driveway & garage
- Ideally located for transport links
- No onward chain



## Description

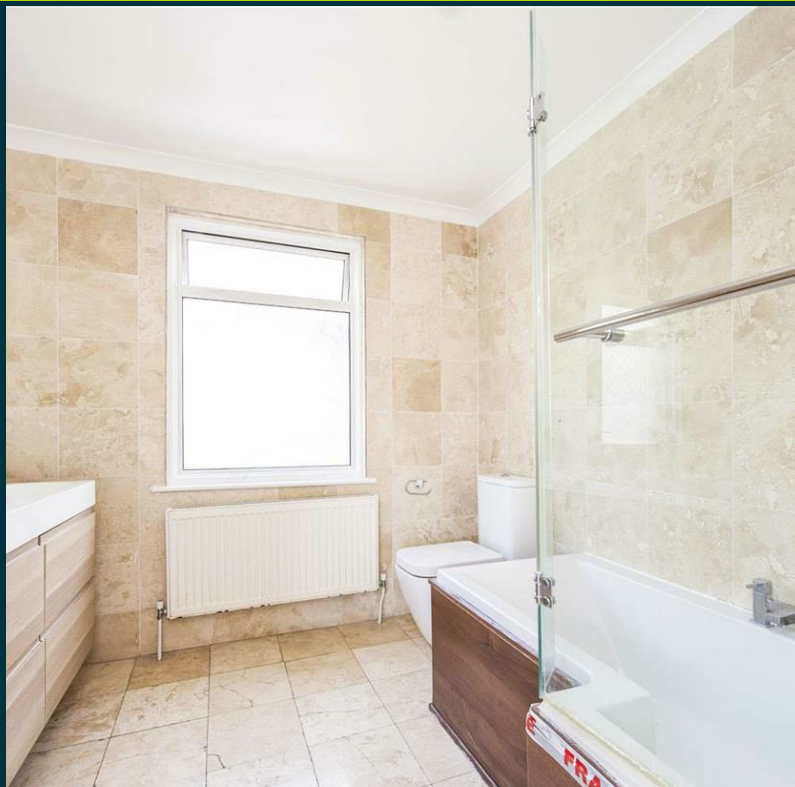
A wonderful and extensive four-bedroom family home. This large property has generous room sizes, well laid out accommodation, and is well presented throughout.

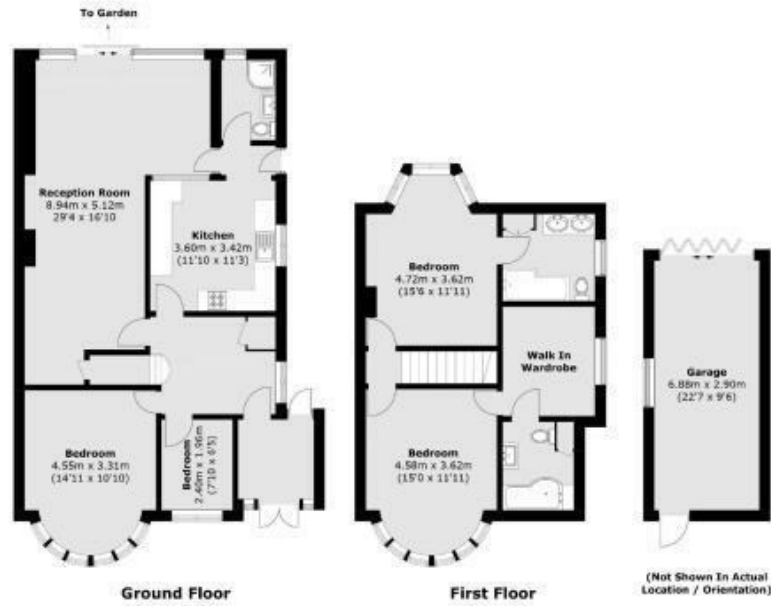
The ground floor comprises a spacious and open plan living room, a modern kitchen, two bedrooms, and a shower room, the first floor offers the master bedroom with an en-suite bathroom and walk in wardrobe and second double bedroom with an en-suite bathroom.

To the front of this fantastic property, there's off-street parking for several cars. The garden to the rear is mainly laid to lawn and has the garage which can be accessed through a rear access road.

Situated on Great West Road, this house is ideally placed for Osterley tube station, swift access to Central London and some fantastic schools.

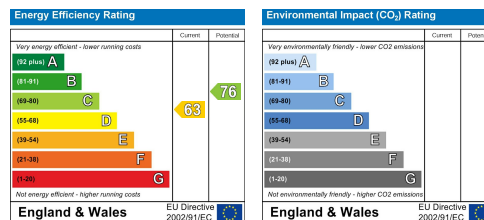






Total area (approx.): 145.6 sq. m (1,567.2 sq. ft)  
Garage (approx.): 20.5 sq. m (220.7 sq. ft)

Care has been taken in the preparation of these particulars, however, their accuracy is not guaranteed and they do not form part of any contract. Measurements stated must be considered maximum.



For more information or to book a viewing, please contact:

**020 8758 1755**

isleworth@chasebuchanan.london

480 London Road, TW7 4DE

**ChaseBuchanan**