



**Lanadron Close
Isleworth**

£325,000

ChaseBuchanan

Key Features

- Viewings accompanied by Chase Buchanan.
- Two bedroom apartment
- Two bathrooms
- Light, bright and airy
- Ground floor apartment
- Parking space



Description

Welcome to Lanadron Close, Isleworth - a charming location that could be your next home sweet home! This purpose-built flat offers a delightful living experience with its spacious two bedrooms and two bathrooms, perfect for a small family or professionals looking for extra space and benefitting further from a lift service and a parking space.

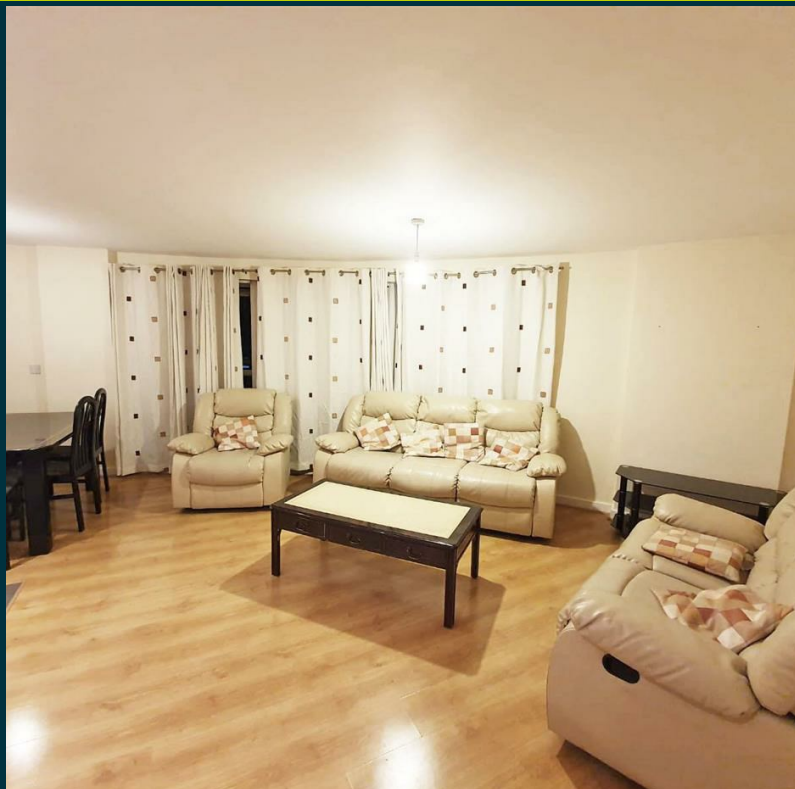
As you step into this property, you'll be greeted by a reception room just waiting for your personal touch to make it a cosy haven for relaxation and entertainment. The abundant natural light that fills the rooms creates a bright and airy atmosphere, making it a joy to spend time indoors.

The two well-appointed bedrooms provide comfortable retreats for a good night's sleep, while the two bathrooms ensure convenience and privacy for all residents. Whether you're getting ready for the day or winding down in the evening, you'll appreciate the functionality and style of these spaces.

This property has an abundance of transport links such as local bus routes - as well as Isleworth mainline railway station. A short bus ride leads to the superfast Piccadilly underground line at either Hounslow East or Osterley underground stations. Also nearby is Heathrow Airport - and the A4/M4 corridor.

The whole area is well served by schools - and restaurants - and shoppers are spoilt for choice - with ample independent stores - as well as high street shops. Green spaces are abundant with local pocket parks - as well as Osterley Park and historic Osterley House in the vicinity - as is the River Thames - with its water sports and riverside walks.





LANGTRY COURT

Approx. Gross Internal Floor Area
64.9 Sq M - 699 Sq Ft

ChaseBuchanan

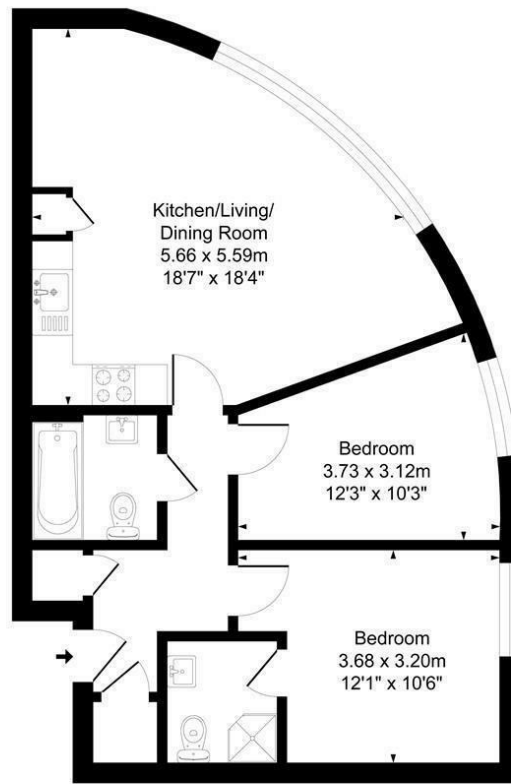


Illustration for identification purposes only, measurements are approximate, not to scale.
Produced By Esjay Property Marketing

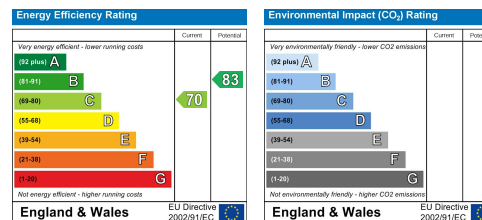
For more information or to book a viewing, please contact:

020 8758 1755

isleworth@chasebuchanan.london

480 London Road, TW7 4DE

Care has been taken in the preparation of these particulars, however, their accuracy is not guaranteed and they do not form part of any contract. Measurements stated must be considered maximum.



ChaseBuchanan