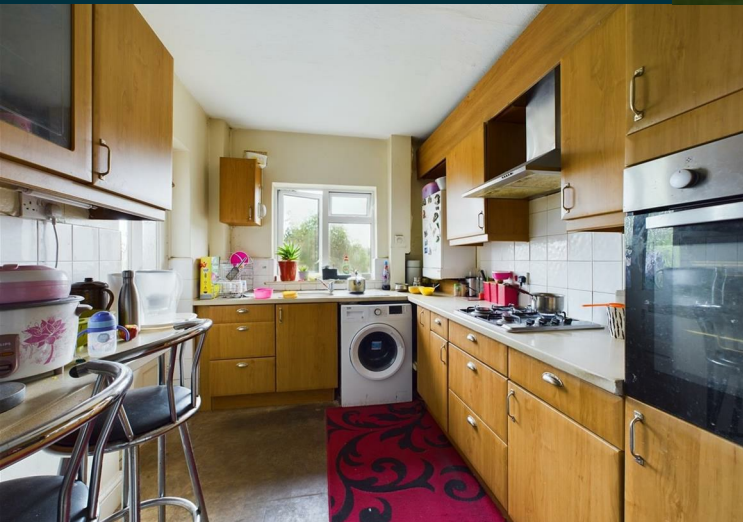
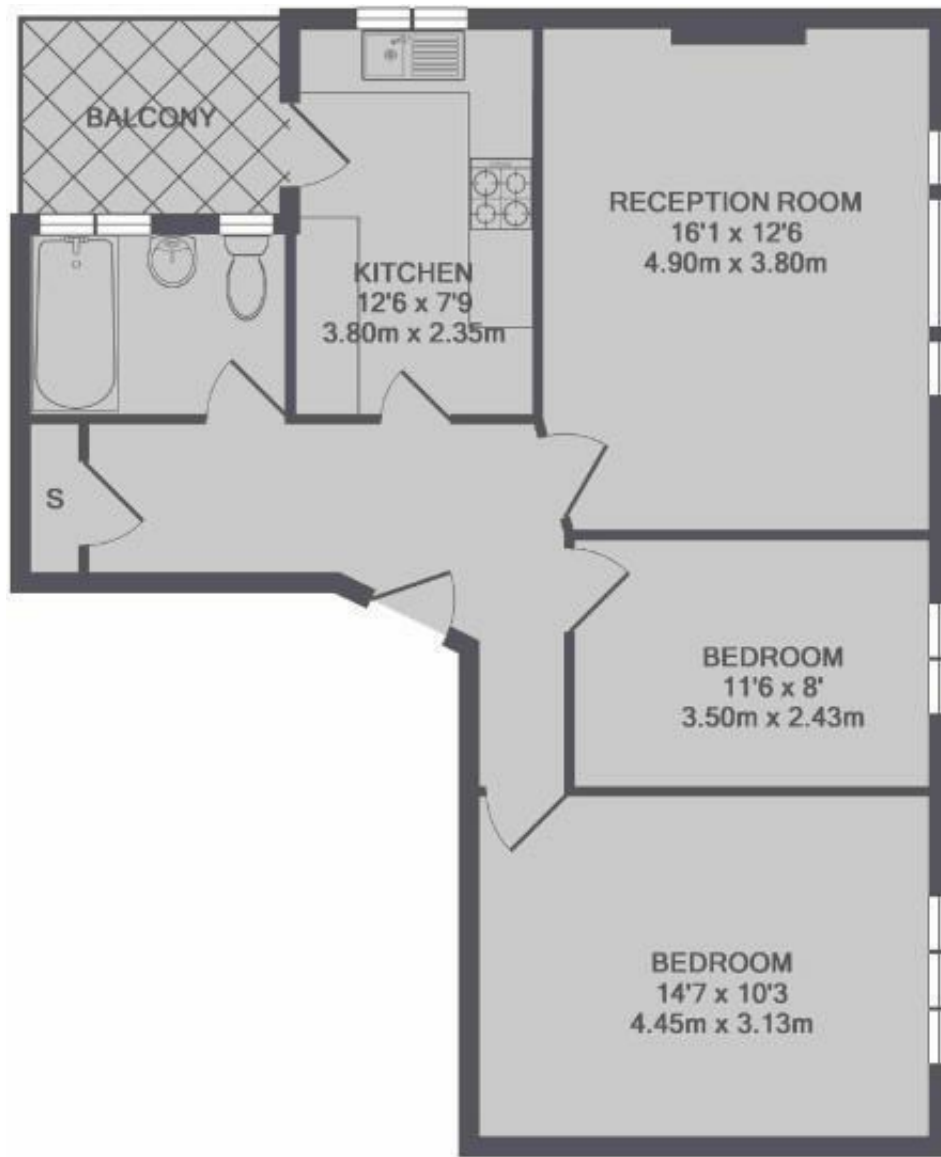


**Great West Road
Isleworth
TW7 4PY**

£1,700 PCM

ChaseBuchanan





TOTAL APPROX. FLOOR AREA 704 SQ.FT. (65.4 SQ.M.)

Energy Efficiency Rating		Environmental Impact (CO ₂) Rating	
Current	Potential	Current	Potential
Very energy efficient - lower running costs		Very environmentally friendly - lower CO ₂ emissions	
A		A	
B		B	
C		C	
D		D	
E		E	
F		F	
G		G	

This spacious two double bedroom apartment is ideal for a small family or two professional sharers. Located within a secure gated development, the property offers excellent storage space and is directly across the road from Osterley Tube Station.

Directions: Osterley Court is perfect for those commuting to London or Heathrow, with Osterley Tube Station just a short walk away. Additionally, the beautiful Osterley Park is conveniently around the corner, providing a lovely escape for leisure and recreation.

For more information or to book a viewing, please contact:

020 8758 1755

ChaseBuchanan

7 Odeon Parade, 480 London Road, Isleworth, Middlesex, TW7 4DE

Care has been taken in the preparation of these particulars, however, their accuracy is not guaranteed and they do not form part of any contract. Measurements stated must be considered maximum.