



**Selbourne Avenue
Hounslow**

£450,000

ChaseBuchanan

Key Features

- Viewings accompanied by Chase Buchanan
- Two bedroom ground floor apartment
- Two bathrooms
- Immaculately presented
- Generous accommodation
- Close to Hounslow tube station and Isleworth train station



Description

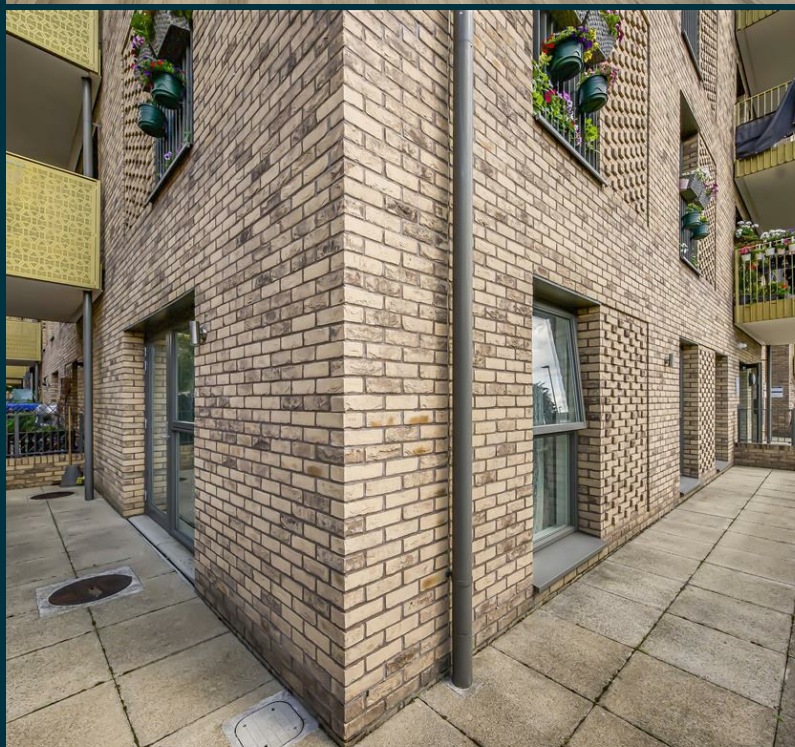
Welcome to Selbourne Avenue, Hounslow - a charming location that could be the perfect setting for your new home! This delightful 2-bedroom ground floor flat boasts not just one, but two bathrooms, ensuring convenience and comfort for you and your guests.

Step inside to discover a property in immaculate condition, offering generous accommodation to meet all your needs. The outside seating area provides a lovely space to relax and unwind after a long day, perfect for enjoying a cup of tea or hosting a small gathering with friends.

Conveniently located close to both Hounslow tube station and Isleworth train station, this property offers easy access to transportation, making your daily commute a breeze. Whether you're looking for a cozy home to settle down in or a smart investment opportunity, this house has the potential to be the perfect fit for you.

Don't miss out on the chance to make this lovely property your own - book a viewing today and envision the possibilities that await you at Selbourne Avenue!





Marylebone Court TW3

Approx. Gross Internal Floor Area
71.8 Sq M - 773 Sq Ft

ChaseBuchanan

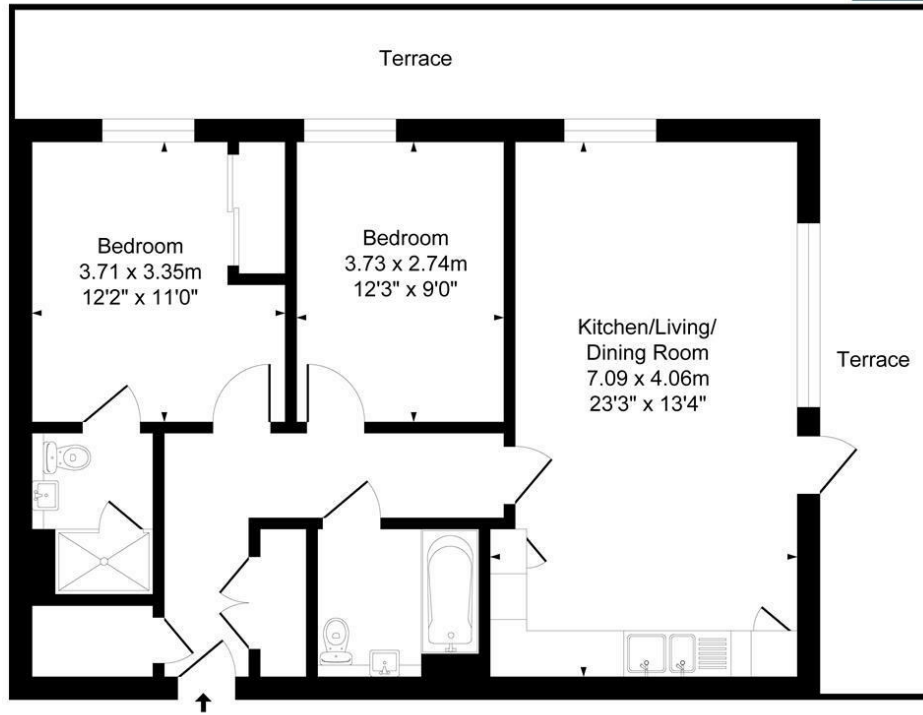


Illustration for identification purposes only, measurements are approximate, not to scale.
Produced By Esjay Property Marketing

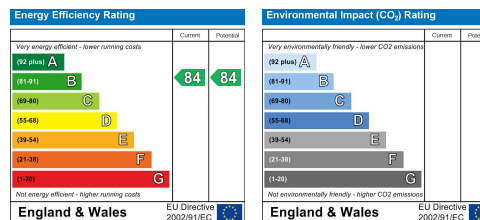
For more information or to book a viewing, please contact:

020 8758 1755

isleworth@chasebuchanan.london

480 London Road, TW7 4DE

Care has been taken in the preparation of these particulars, however, their accuracy is not guaranteed and they do not form part of any contract. Measurements stated must be considered maximum.



ChaseBuchanan