

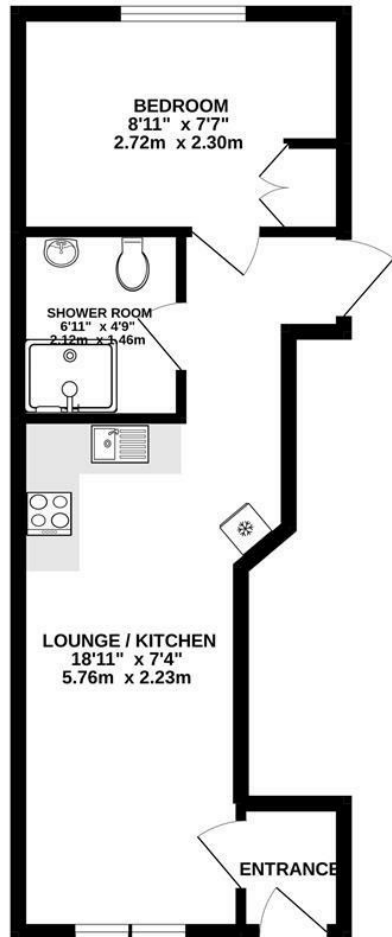
North Hyde Lane  
Hounslow  
TW5 0EQ

£1,300 PCM

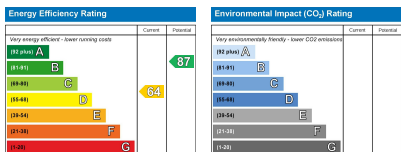
ChaseBuchanan



GROUND FLOOR  
358 sq.ft. (33.3 sq.m.) approx.



TOTAL FLOOR AREA : 358 sq.ft. (33.3 sq.m.) approx.  
Produced solely for Chase Buchanan  
Made with Metropix ©2022



- One bedroom Annex
- Close to all local amenities
- Shared garden
- Presented in excellent condition
- Modern shower room
- All utility bills included Except Electric
- EPC rating D
- Single professional Only

Set in a highly desirable residential location and presented in excellent condition, a spacious one bedroom annex flat. This property is ideal for anyone looking for something modern and clean that offers close proximity to the local shops and bus routes. Features include a spacious open plan lounge and kitchen, modern shower room, a double bedroom with built in wardrobe and a shared garden to the rear. The property also benefits from all utility bills being included in the rent with the only exception being the electric. Seen as the perfect home for a single professional only and early viewings are highly recommended to avoid disappointment.

Chase Buchanan are bonded members of ARLA PropertyMark.

For more information or to book a viewing, please contact:

020 8758 1755

**ChaseBuchanan**

7 Odeon Parade, 480 London Road, Isleworth, Middlesex, TW7 4DE

Care has been taken in the preparation of these particulars, however, their accuracy is not guaranteed and they do not form part of any contract. Measurements stated must be considered maximum.