



**Twickenham Road
Old Isleworth**

£450,000

ChaseBuchanan

Key Features

- Viewings accompanied by Chase Buchanan
- Gated development
- Two double bedrooms
- Two bathrooms
- Open plan dual aspect living/dining room
- Lift serviced
- Secure underground parking
- Close to St Margarets & Richmond
- In excess of 1000 sq. ft of living space
- Chain free

Description

Set in one of the most sought after gated developments in Old Isleworth, this lift serviced second-floor luxury apartment spans just over 1000 sq. ft of living space.

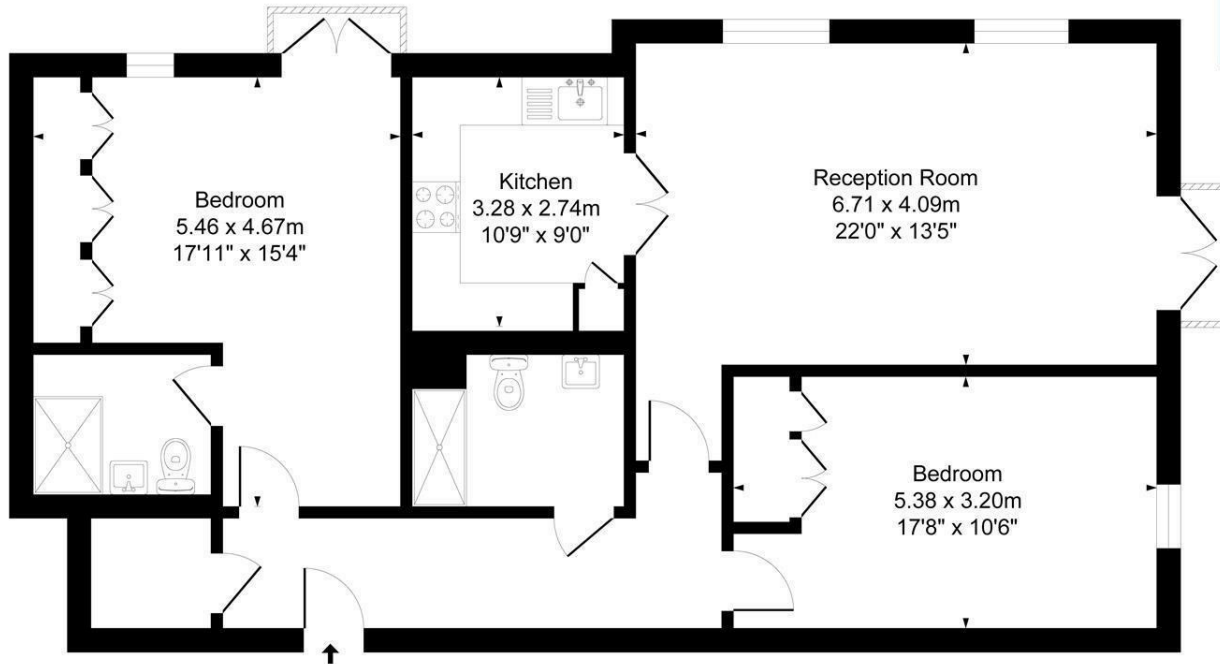
The accommodation comprises a bright open plan and dual aspect living/dining room with a Juliet balcony, a modern fitted kitchen with built-in Neff appliances, a master bedroom with an en-suite shower room, built-in wardrobes, and a Juliet balcony, a second double bedroom again with built-in wardrobes and a family bathroom. Further benefits include ample storage, a lift straight into the underground car park with an allocated parking space, and bike storage.

Holme Court is situated behind Van Gogh House (former residence of Vincent Van Gogh) in proximity to the River Thames, St Margarets, Twickenham, Richmond, and close to all the amenities of Old Isleworth Village. The highly rated Blue School, St Mary's School, and Isleworth Town School are also very close by. An early viewing is highly recommended by the vendors' sole agent Chase Buchanan.





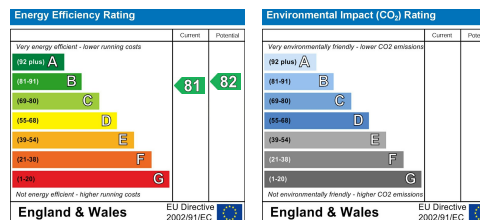
Approx. Gross Internal Floor Area
101.8 Sq M - 1096 Sq Ft



Second Floor

Illustration for identification purposes only, measurements are approximate, not to scale.
Produced By Esjay Property Marketing

Care has been taken in the preparation of these particulars, however, their accuracy is not guaranteed and they do not form part of any contract. Measurements stated must be considered maximum.



For more information or to book a viewing, please contact:

020 8758 1755

isleworth@chasebuchanan.london

480 London Road, TW7 4DE